



Hillsides

CREATING LASTING CHANGE

Annual Report

Building Bridges

23

24



Message from Leadership



Stacey Roth, LCSW | Chief Executive Officer

Dear Hillside Community,

I am thrilled to share the remarkable achievements we have accomplished together in the 2023-2024 program year. Our collective efforts have not only exceeded expectations but have also set new benchmarks for success. As we reflect on our journey, I am proud to highlight some of the key milestones that have shaped our progress.

Advancement exceeded its fundraising goal of \$2.6 million by more than \$100,000, resulting in a total of \$2,708,326. This incredible achievement is a testament to the unwavering support and generosity of our donors. A key contributor to the success was our annual gala which raised over \$560,000 net! This record-breaking event not only brought our community together but also provided vital funds to support our programs and initiatives.

We are proud to have developed the first wellness training pilot through Hillside Center of Excellence. This initiative is a significant step towards promoting mental health and well-being within our community, taking our trauma-informed approach with clients and expanding that to other organizations.

Internally, Hillside continues to make strides in reducing turnover and fostering a strong and stable workforce. Our workforce development initiatives continued to thrive, with the first cohort of managers receiving the “I Lead Me” leadership training. Moreover, Hillside thought leaders were invited to speak at relevant conferences and join panels hosted by various organizations including the Huntington Medical Research Institutes, Open Minds, and Eleos.

As we move forward, I am confident that our continued dedication and collaboration will lead to even greater accomplishments. Thank you for your unwavering support and commitment to Hillside. Together, we create lasting change and make a profound impact on the lives of those we serve.

Sincerely,

A handwritten signature in dark ink, appearing to be 'SR' or a stylized version of the name Stacey Roth.

Stacey Roth, LCSW
Chief Executive Officer



*Hillsides touched the lives of **13,173** children, youth, and families from July 2023 to June 2024.*

Hillsides' Impact



Community-based
Mental Health

11,412



Residential and
Day Treatment

573



Foster Care and
Adoption

770



Support for
Young Adults

418

About Hillsides

At Hillsides, we create pathways to healing for children, youth, and families across Southern California. Through trauma-informed mental health care, safe and nurturing environments, and unwavering support, we help individuals overcome adversity and thrive. Our programs span from early childhood to adulthood, offering services that range from community-based care to residential and day treatment, foster care, adoption, and support for youth transitioning into independence.

No matter where someone begins their journey, Hillsides is a place of compassion, belonging, and hope for everyone.



Hillsides main campus in Pasadena

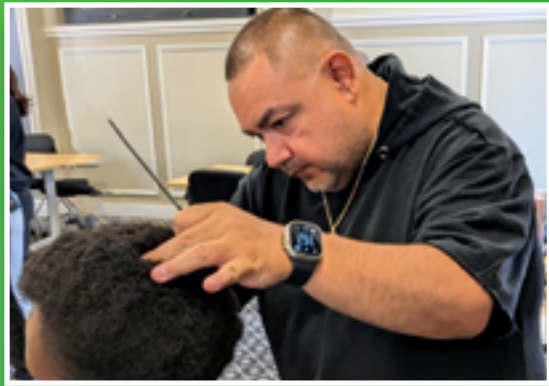


Youth Moving On kitchen



Bienvenidos Foster Care and Adoption in Upland





Client gets a fresh cut at an on-site spa day



Child paints a picture of hope



Volunteers serve food to clients during annual carnival



Who We Serve

At the Heart of Hillsides: Connection, Care, and Community

Every day, Hillsides opens its arms to individuals from all walks of life—infants, youth, young adults, and families navigating life’s most complex challenges. Some come to us seeking refuge from crisis. Others are looking for someone to listen, advocate, or walk alongside them through a difficult chapter. What unites them is not just their need—but their strength, and their right to be seen, supported, and believed in.

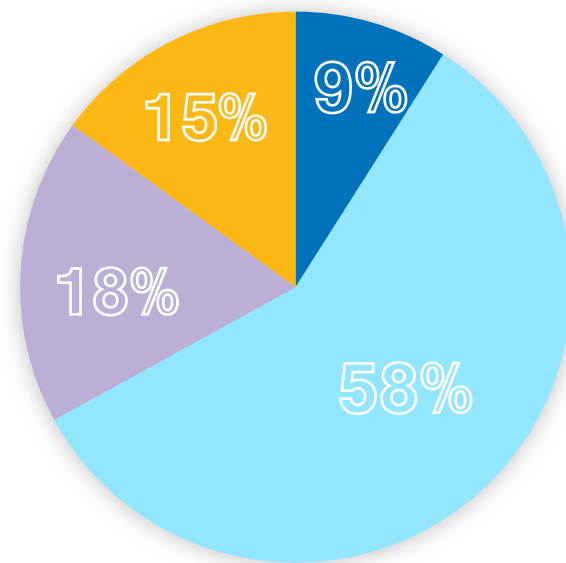
While many know us as a treatment center, over 80% of our services take place beyond our walls—in living rooms, classrooms, community parks, and wherever care is needed most. We are not a place people come to. We are a people who come to them.

Across Southern California, we serve over 13,000 individuals and families each year, through a wide continuum of care. From mental health services for toddlers and teens, to housing and workforce support for young adults, to the loving homes created through foster care and adoption—our reach is wide, and our impact is deeply personal.



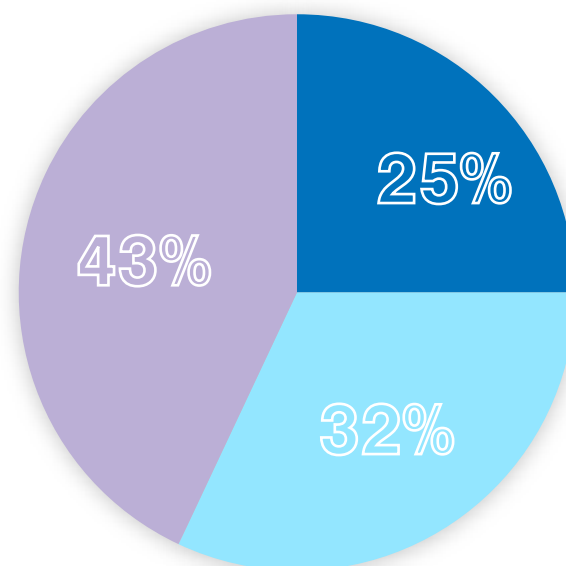
Ages Served:

■ BIRTH TO AGE 5
 ■ AGES 6-17
 ■ AGES 18-25
 ■ ADULT

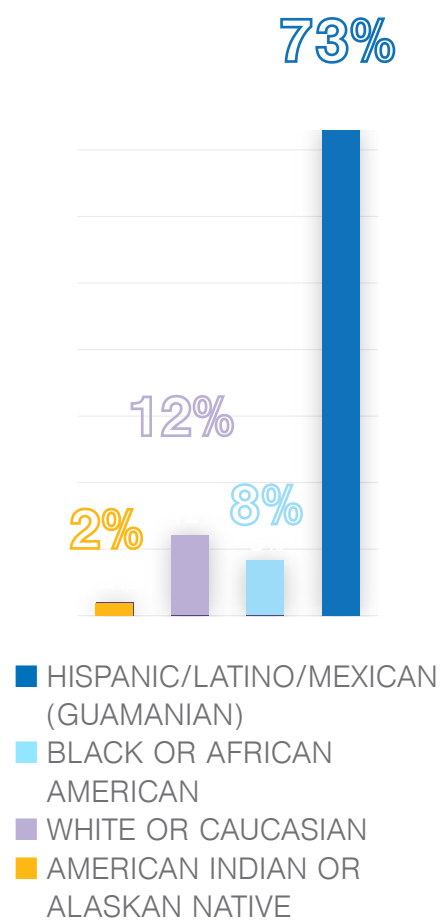


Gender: Inclusive, all identities served

■ NONBINARY/NOT REPORTED
 ■ MALE
 ■ FEMALE



Race:



Services Delivered:



Community-based
Mental Health



Residential and
Day Treatment



Foster Care and
Adoption



Youth Housing
and Workforce
Development



Family Preservation
and Crisis
Support

At Hillside, our mission lives in every high five between siblings who've learned to trust again, every nod of understanding between a mother and child, and every quiet step a family takes toward healing—together. These are the invisible threads—the bridges—that carry children and families over hardship, uncertainty, and the weight of what they've endured. Beneath every bridge we build are the barriers they're overcoming: trauma, displacement, isolation, fear. But with care, consistency, and community, we help them cross—brick by brick—toward healing, hope, and opportunity.

About This Report

Hillsides' mission is to strengthen and nurture the lives of children, youth, and families through healing relationships, comprehensive support, and unwavering care. Every program, every service, and every act of advocacy is rooted in our belief that well-being begins with connection—and that everyone deserves a path forward.

This report offers a window into the work of the past year: stories of progress and resilience, data that reflects meaningful reach, and glimpses into the relationships that made it all possible. The work we do is often quiet, deeply personal, and always collaborative—like building a bridge, brick by brick, to help someone cross from crisis to stability, from uncertainty to opportunity.

We share these narratives and impact measures not only to honor the journeys of those we serve, but to remind ourselves—and our community—that healing is never walked alone. Every bridge built this year was made possible by your belief in what's possible.



Clients decorating water bottles



Hillsides team members at Hillsides Support Services celebration



Young adult looks to her future



Child and therapist



Anime illustration class for Hillside clients



Kids enjoying hosted carnival



This Year at a Glance

“We serve individuals from birth to age 65—because healing has no age limit.”

11,412

individuals and families served through Bienvenidos and Hillside Family Resource Centers

3,000

individual points of service provided through Youth Moving On

327

children and youth supported through residential and day treatment programs

213

unaccompanied minors from over **37 countries** received shelter and reunification services

16

adoptions finalized through Bienvenidos Foster Care and Adoption

6

youth supported through HillsideHome, expanding our legacy short-term residential care



Community-Based Services

Bridges are built for connection—for safe passage from one place to another. At Hillside's, our Community-Based Services team builds bridges every day: between uncertainty and stability, between isolation and support, between trauma and healing. These programs meet children and families where they are—literally—in their homes, schools, and communities. With compassion and cultural sensitivity, our therapists help clients navigate complex emotional landscapes, offering personalized tools, unwavering presence, and a path forward.



This story is one of many bridges we've helped build this year.



Emma's Story: Painting a Fuller Picture

Emma's childhood was marked by uncertainty. Her parents, each struggling with mental health and legal challenges, were unable to provide a safe or stable home. But amidst the chaos, Emma found her anchor—her grandmother. When Emma was just seven years old, her grandmother made the life-changing decision to adopt her, offering not only love and security, but a fresh start.

Even with a safe home, the weight of Emma's early experiences lingered. As a teenager, she began to withdraw—her anxiety deepened, panic attacks grew more frequent, and self-worth slipped away. It was a close friend's gentle concern that sparked her next brave step: reaching out for help.

At just 14 years old, Emma entered therapy through Hillside's Community-Based Mental Health Services. What she found was not just clinical support, but genuine care. Week by week, Emma began to rebuild. Through mindfulness, journaling, and guided breathing, she created moments of calm in the noise of her thoughts. Her therapists didn't just teach coping strategies—they helped her see herself as worthy of healing.

Emma's treatment included individual and family therapy, as well as cognitive behavioral therapy (CBT), which helped her challenge the negative thought patterns that once felt all-consuming. Slowly, her confidence returned. She began expressing herself through art, even joining her high school's art program, where she continues to thrive.



Emma's journey is a powerful reminder that healing takes time—but it is always possible. With Hillside's by her side, she's learned to manage her emotions, trust her inner strength, and embrace a future full of possibility.

Residential and Day Treatment Services

Bridging Safety and Strength, One Breakthrough at a Time

Some bridges require deeper foundations—stronger structures to carry the weight of trauma and healing. Hillside's Residential and Day Treatment programs provide just that: a fully integrated, intensive level of care for youth navigating complex mental health needs. With a dedicated team, therapeutic spaces, and a continuum of support, we create safety where there once was risk—and possibility where there once was fear. For many children and teens, this level of care becomes the bridge that reconnects them with family, culture, and hope.

 This story is one of many bridges we've helped build this year.



Yuting's Story: A Bridge to Family Well-Being

When 14-year-old Yuting arrived at Hillside's, she carried not just a suitcase, but years of pain. Originally from China, she had recently moved to the United States to live with her mother—a woman she had not seen in years. Raised by grandparents who enforced rigid discipline and inflicted emotional and physical harm, Yuting had learned to suppress her voice, her needs, and her joy. A gifted Taekwondo athlete, she left behind a sports school where she faced exploitation and neglect. By the time she arrived in Southern California, she was physically ill, emotionally withdrawn, and overwhelmed by a lifetime of unmet needs.

Her entry into care was urgent. Within days, the Hillside's team recognized the need for both medical and psychiatric intervention. Diagnosed with Major Depressive Disorder with psychotic symptoms, Yuting was at serious risk—battling suicidal ideation, frequent self-harm, and intense disconnection. But what followed was the power of community-based healing, wrapped in compassion and cultural competence.

A full-time Mandarin interpreter was brought in to ensure Yuting could participate meaningfully in her treatment. She was surrounded by a team that worked not just on stabilization, but on building trust—slowly helping her see that her story could include peace, connection, and even joy. Hillside's clinicians engaged her in a 504-Plan, tailored educational supports, and regular therapy sessions. With family therapy and consistent support, her mother—once hesitant and unsure—became a



partner in her healing. She found new housing, secured stable employment, and surrounded herself with a circle of support.

Yuting's progress was nothing short of transformative. Her psychiatric hospitalizations became a thing of the past. Self-harm stopped. And slowly—her voice, her needs, and her joy returned. By the end of her time at Hillside's, she was fluent in English, engaged with her peers, and finally ready to live life on her terms.

When it was time to reunify with her mom, the moment was tender and triumphant. Her mother arrived with a bouquet of flowers and eyes filled with pride. Together, they stepped into a new beginning—walking across a bridge they built together, and ready to embrace what lay ahead.

Support for Young Adults

Bridging Youth to Independence, One Milestone at a Time

For young adults navigating life after foster care, the path to independence can feel unmarked and uncertain. At Hillside, we offer more than a map—we provide support that orients, anchors, and empowers. Whether through housing, mentorship, or healing relationships, we help young people not only find their way—but believe they belong on the road ahead.

 This story is one of many bridges we've helped build this year.



Mars's Story: Becoming Her Own Advocate

Mars's earliest years were shaped by instability. Removed from her parents' care as an infant due to substance use, she was placed with her grandmother, who did her best but struggled with the demands of caregiving as she grew older. With no other family support and her mental health worsening, Mars longed for independence—but also for guidance. She was holding too much on her own and unsure how to move forward.

When Mars entered the Youth Moving On housing program, things began to shift. For the first time, she had a safe place to land—and a team that truly listened. With her therapist, she explored her emotions and began unpacking the layers of trauma and uncertainty that had shaped her adolescence. In sessions with her Youth Advocate, she built confidence around budgeting, setting goals, and caring for her own well-being.

Mars's transformation wasn't just internal—it was visible. She developed routines, learned how to regulate her emotions, and discovered the power of using her voice. She joined Career Club and completed multiple internships, including one with a local independent film project and another with the LGBTQ+ Center on her college campus, where she was eventually hired.

Now, Mars is preparing to attend her dream school—San Francisco State University—where she'll continue exploring her passions and identity in a supportive, affirming environment.



With every milestone, Mars is moving forward, equipped with the strength, skills, and support to thrive on her own terms.



Foster Care and Adoption

For many children in foster care, the question isn't just where they will live—it's who will stand by them. At Hillside and Bienvenidos, we know that healing begins with connection. Through therapeutic home-based care, trauma-informed support, and a commitment to every child's future, we help build the bridges that lead from instability to belonging. Behind each story is a network of adults—resource families, social workers, therapists—who refuse to give up, no matter how winding the road.

 This story is one of many bridges we've helped build this year.



Michelle and Lucia: A Sisterhood Strengthened by Support

When two teenage sisters, ages 13 and 15, entered the Department of Children and Family Services in 2017 due to caretaker absence, their world was upended. Their birth mother had gone to work one day—and never came back. With no extended family to turn to, the girls were placed in foster care. Though they had each other, they carried deep wounds of abandonment and distrust.

Over time, Michelle and Lucia formed a close bond with their resource mother and their Hillside's foster care social worker. Through consistency, presence, and compassion, the case worker helped the girls navigate their emotions and build a foundation of trust. Both were enrolled in therapy and, in time, successfully completed their treatment. They began attending school regularly, excelled academically, and, for the first time in years, felt seen and supported.

When Michelle turned 18, she voiced a fear many youth in care carry: What happens to me now? Her resource mother didn't hesitate. She promised both girls that her home would always be their home. Michelle eventually moved out to begin college and work, but remained closely connected to both Lucia and their resource mom.

For Lucia, however, another chapter of hardship was unfolding. During her senior year of high school, a painful breakup triggered a resurgence of depression and deep emotional withdrawal. She stopped going to school, lost her job, and disconnected from nearly everyone around her. But her support team didn't let go. Her



therapist visited weekly—sometimes more—and stayed in constant communication with school staff and the resource mother. She provided emotional education, encouraged therapy, and even accompanied the teen to psychiatric evaluations when asked.

Together, they fought for a second chance. The school agreed to allow Lucia to complete classes online over the summer. Slowly, her motivation returned. She graduated with her high school diploma in July 2024, completed therapy, and returned to the job she once lost—now thriving and confident.

Today, both sisters are attending college and living together once again in the resource home they still call their own. Their dreams continue to unfold—one hopes to become a doctor—but their shared foundation remains firm. Their story is a testament to what's possible when young people have adults who stay, advocate, and believe.

Sometimes the most powerful bridges are the people who walk beside you until you're ready to run.



Hillsides team members discuss future initiatives



HillsidesCares joins industry leaders at behavioral health conference



Hillsides attends Fuller University Internship Fair



In the Community: Showing Up, Elevating Voices, Celebrating Together

All bridges are unique in form. At Hillsides, we know that healing often unfolds along many paths—some quiet and personal, others public and shared. Whether it’s in a therapy room, a neighborhood park, a panel discussion, or a ballroom filled with supporters, each path we take brings us closer to the same destination: hope, healing, and connection.

This year, we walked those paths with intention—joining conversations that matter, uplifting stories that need to be heard, and celebrating alongside the community that makes this work possible. Whether presenting at conferences, contributing to public dialogue, or gathering for our annual gala, we’ve remained grounded in our purpose: to lift voices, strengthen community ties, and celebrate every step forward—together.





Thought Leadership & Community Engagement

Throughout the year, Hillside's team members were invited to share insights and advocate for the children and families we serve. These opportunities helped amplify our trauma-informed approach and ensure our voice shaped local and statewide conversations.



Casey Meinster, Division Chief of Campus-Based Services, joined a panel of experts to address pressing issues facing children and youth today in accordance with the Huntington Medical Research Institutes.



Greg Santilli, Chief Financial Officer, presented at the Open Minds CFO Summit about Hillside's successful strategies for financial stability.



Tom Foster, Senior Director of Technology Services, joined Welligent CEO and other tech thought leaders to discuss the use of AI innovation in conjunction with Eleos.



A Celebration of Connection: Hillside's Gala 2024

Held at The Westin Bonaventure Hotel & Suites in Downtown Los Angeles, our 2024 gala brought together over 330 supporters in a joyful evening that raised more than \$560,000 to support and advance our mission. The night honored Hillside's former leader and advocate, John Hitchcock, and a special guest and former recipient of Hillside's services, Clifford Sisneros. Sisneros spoke about his time as a client at Hillside's and how John and others impacted his life well into adulthood. Now a thriving artisan and entrepreneur, Sisneros reminds us what's possible when we build the path forward — together, we cross the bridge to hope.

It wasn't just a fundraiser—it was a moment to pause, reflect, and celebrate how far we've come together. Guided by the theme Artist in Residence, the evening invited us to see ourselves as co-creators in the lives of the children and families we serve. Every ticket, every tribute, every toast carried the same message: that bridges are built not only in quiet acts of service, but also through bold strokes of community, connection, and care.



Nancy Wilson of the band Heart



Clifford Sisneros giving speech



The Westin Bonaventure Hotel & Suites



Live painting created of Elton John



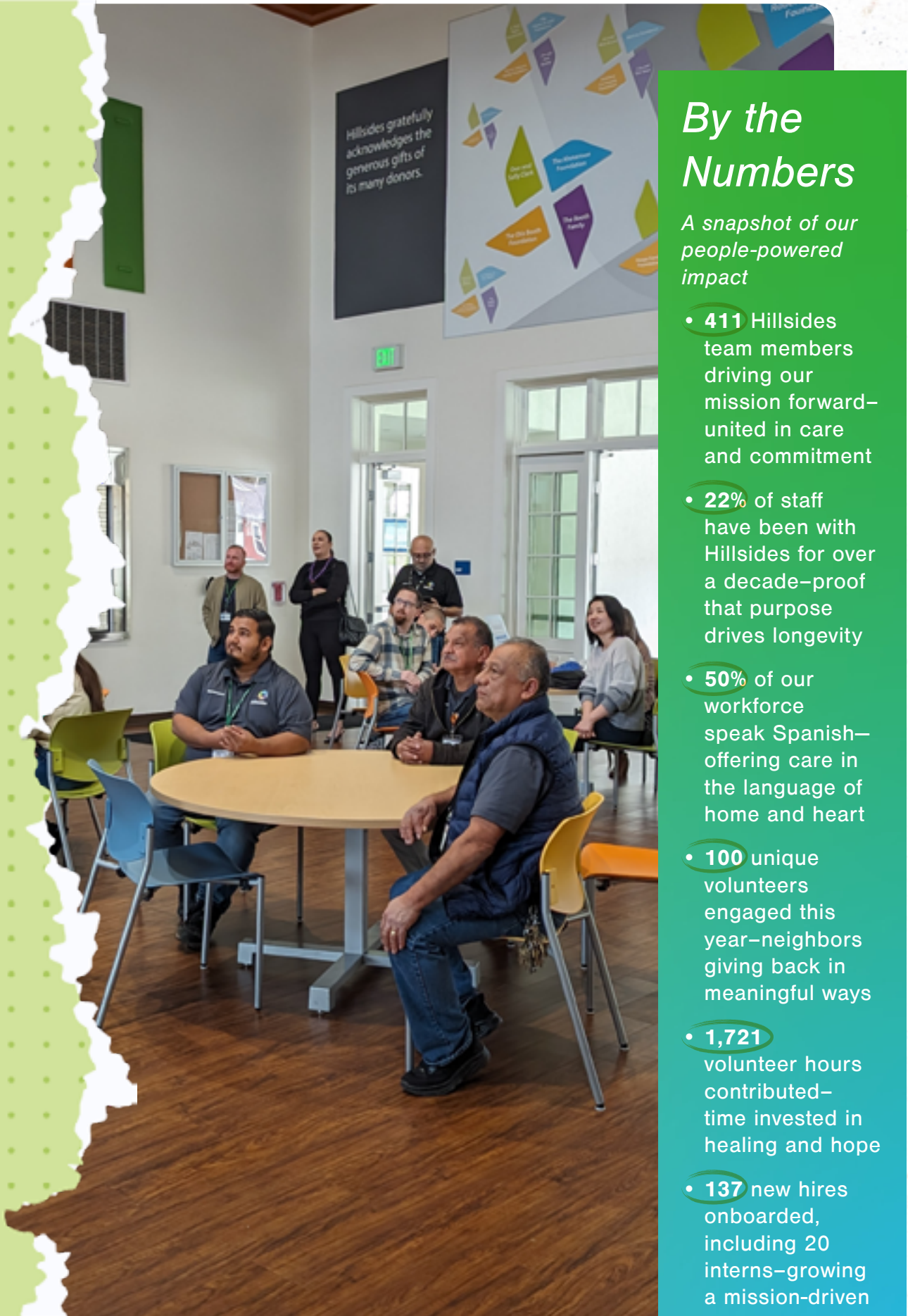
Hillside's facilities team



Photo booth fun



Team building craft



By the Numbers

A snapshot of our people-powered impact

- **411** Hillside's team members driving our mission forward—united in care and commitment
- **22%** of staff have been with Hillside's for over a decade—proof that purpose drives longevity
- **50%** of our workforce speak Spanish—offering care in the language of home and heart
- **100** unique volunteers engaged this year—neighbors giving back in meaningful ways
- **1,721** volunteer hours contributed—time invested in healing and hope
- **137** new hires onboarded, including 20 interns—growing a mission-driven workforce

The Heart of Hillside's

Celebrating the *people* behind the *purpose*

At the core of Hillside's is a deeply committed network of team members, volunteers, donors, and partners who make this work possible. They are clinicians, youth advocates, support specialists, therapists, social workers, educators, administrative teams, and generous volunteers—each one playing a vital role in making sure every child and family feels supported, safe, and seen.

Whether helping navigate medical appointments, coordinating a housing plan, providing career workshops, or simply offering a listening ear, these individuals embody our mission every day. They are the hands, hearts, and voices behind every breakthrough—and their collective care is what allows kids to be kids, young adults to find their footing, and families to move forward together, with dignity, strength, and hope.





Staff Highlights

Guided by Purpose



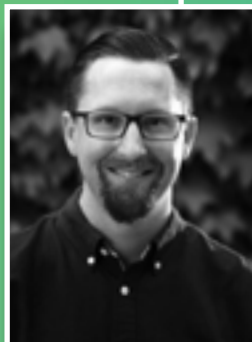
"Recently one of my client's fathers shared that prior to our meetings, he didn't know the importance of floor play for babies. We discussed some of the benefits for children, including: the promotion of confidence, self-regulation, curiosity, and a healthy attachment. Since then, he began incorporating floor play on a regular basis with his son and expressed excitement about helping his baby explore his world."

– Adriana Gonzalez, Therapist



"I couldn't save my brother's life, but I can save the lives of others."

– Greg Santilli, CFO of HillSides, Donor



"I feel excited and honored to take on this role of Clinical Director. The process of adopting my little sister ignited a passion for helping others. I am excited to pursue this passion further in my role by leading the clinical members across a variety of programs and providing a positive impact to the youth and families we serve."

– Matt Phillips, Clinical Director



Volunteer Voices

Generosity in Action



Meet Uyen-Uyen Vo – a longtime volunteer, donor, and board member whose impact can be felt across our locations.

"I know from experience how one kind gesture from a stranger can change the trajectory of one's life for the better. If I make an impact for at least one person, it is worth all the effort."

– Uyen Uyen Vo

Behind every healing journey is a team that made the path possible. The generosity of our volunteers and donors reaches deep into the lives of those we serve, providing the comfort, joy, and dignity that help light the way forward.

Holiday Highlights

In 2023 alone, community support helped us deliver:

- **2,500** client wishes (gifts selected specifically for children and adults we serve)
- **300** holiday meals shared with families
- **20** decorated Christmas trees gifted to residential homes
- **125** filled holiday stockings
- **3,000+** diapers and wipes
- **500+** pairs of socks
- An estimated **\$160,000** value in total holiday giving



Members of HillSides Volunteer Network



Members of H100 and longterm supporters of HillSides





Lasting Kindness

The behavioral health sector has continually looked for ways to measure program success and outcomes of clients. In 2006, Hillside's began this endeavor with the input of many people including two board members and supporters, Susan Noce and Dr. Elizabeth "Libby" Short. Together with these talented women, we developed a framework for our program assessment to identify patterns and trends associated with the Hillside's care teams.



Susan Noce

As a brilliant physician, Libby's advice and direct nature allowed Hillside's to explore questions that needed to be answered. Susan, a former nurse, brought her unique perspective to the initiative, helping to revise the nursing manual and also serve as a champion for Hillside's team members.



Libby Short

This forward-thinking outlook was the catalyst for the Program Assessment Committee, which was the first time Hillside's blended both board members and internal employees to delve into the topic.

Hillside's is grateful for the tremendous support and lasting impact Susan and Libby brought to the organization.

Financial Report

Revenue and Expenses

Figures shown in thousands for the fiscal year beginning July 1, 2023 and ending June 30, 2024

| | |
|--|----------|
| Revenue | |
| Government Service Contracts | \$41,226 |
| Paycheck Protection Program Loan Forgiveness | \$5,540 |
| School Program Fees | 493 |
| Contributions ¹ | \$2,259 |
| Other | \$779 |
| Gain or (Loss) on Investments | \$202 |
| In-kind Contributions | \$249 |
| Total Revenue | \$50,749 |
| Expenses | |
| Program Services | \$40,229 |
| General and Administrative | \$5,100 |
| Development and Fundraising | \$771 |
| Total Expenses | \$46,101 |
| Change in Net Assets | \$4,648 |

Balance Sheet

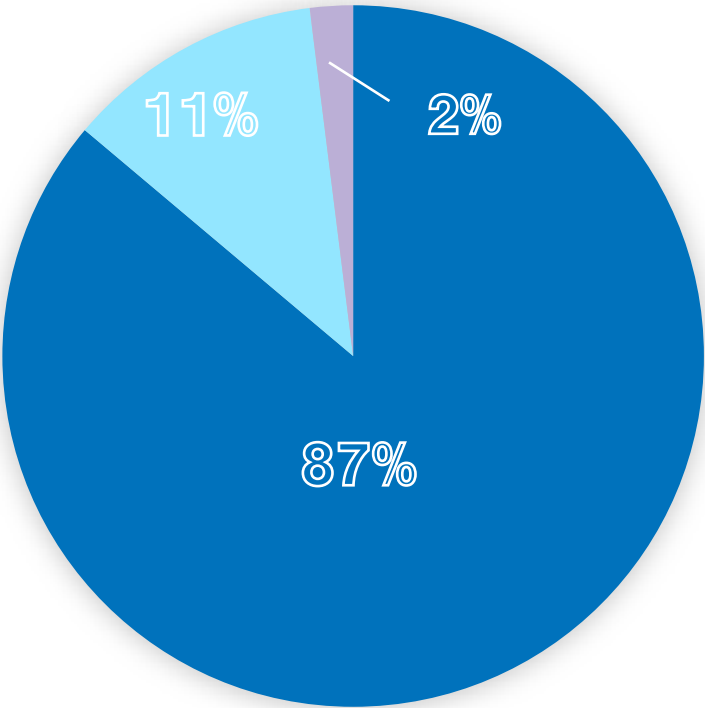
Year ending June 30, 2023 (summarized in thousands)

| | |
|----------------------------------|----------|
| Assets | |
| Current Assets | \$12,133 |
| Investments | \$2,385 |
| Fixed Assets | \$26,061 |
| Other Non-current | \$1,481 |
| Total Assets | \$42,059 |
| Liabilities | |
| Current Liabilities | \$5,105 |
| Non-current Liabilities | \$11,795 |
| Total Liabilities | \$16,900 |
| Net Assets | |
| Without Donor Restrictions | \$23,242 |
| With Donor Purpose Restrictions | \$1,918 |
| Total Net Assets | \$25,160 |
| Total Liabilities and Net Assets | \$42,059 |

1. Contributions line item includes \$4,000 in capital campaign contributions for five-year capital campaign.

Expenses

- PROGRAM SERVICES
- GENERAL AND ADMINISTRATIVE
- DEVELOPMENT AND FUNDRAISING



A heartfelt thank you to our generous donors!

Circle of Excellence

Anonymous Friends
Jill K. Allen and Burton Lee Harry
American Foundation
Mr. and Mrs. John J. Anderson
Armanino LLP
Isidro Armenta
Gayla Armstrong
Keith Arnett and Jennifer Shen
Assistance League of Pasadena
Ayrshire Foundation
Mr. and Mrs. Guilford Babcock
Baby2Baby
Bank of America
Los Angeles County Board of
Supervisor Kathryn Barger
James Barnes
Rev. Tommy Baughman
Armida Baylon
Mr. and Mrs. Robert Beggs
Guy Beutelschies
Bies Family Foundation
Big Sunday
BMO
Debbe and Spike Booth
Mr. and Mrs. Morgan Booth
The Otis Booth Foundation
BoozeFighters
Born To Be Loved
Mr. and Mrs. Donald Briggs
Mr. and Mrs. Chip Brooks
C.W. Driver Companies
Claudia Calandrino
Campbell Hall Episcopal School
Valerie Casey and Lawrence E. Uhl
Church of the Transfiguration - Arcadia
Ceinwyn Clark
Don and Sally Clark
Mr. and Mrs. David Coher
Michael J. Connell Foundation
Dr. Bree E. Cook
Joseph M. Costa
Create Now
Phyllis D'Ambra
Mr. and Mrs. Philip Davis
Davis Wright Treamaine LLP
Mr. and Mrs. Christopher De Mond
Lauralyn Deringer

The Carl & Roberta Deutsch Foundation
Mr. and Mrs. John E. DeWitt
Damon Didawick and Andrew Stoner
Mr. and Mrs. Kirk D. Dillman
Robin Dorman
Linda Dupuis
Carleen Eaton
William B. Eichler and Edison Barbosa
Gail G. Ellis Foundation
Mr. and Mrs. Andrew A. Esbenshade
Carrie Espinoza
James and Tania Farha
Mr. and Mrs. Ross Farrell
First Congregational Church of Pasadena
Dr. and Mrs. Michael Fishbein
Dee F. Fisher and Mark S. Martinez
Mr. and Mrs. Robert A. Fisher
Mr and Mrs. Mario Fiumani - PIN USA, Inc.
Jeannie Flint and David Werbelow
Dr. and Mrs. Henri Ford
Foster Love
Louise Fox
Fox Alternative Entertainment, LLC
Jim Franke and Steve Bialecke
Friends of Foster Children
Brett Furrey
Arthur J. Gallagher & Co.
Mr. and Mrs. Steve Galletly
Mr. and Mrs. Stephen E. Gill
Helen Jean Girard
Girl Scouts Troop 4961
Dr. and Mrs. John W. Given
Ed and Shari Glazer
Max H. Gluck Foundation
Goehner Accountancy
John S. Gong
Sandra Gong
Marc J. Gorlin
Greater Horizons
The Green Foundation
Sara Jane and Alfredo Guzman
Mary Dee Hacker and Steven Nishibayashi
Mr. and Mrs. John Harabedian
Mia Harboe
Mr. and Mrs. Daniel Harper
David Hawley
Bud and Barbara Hellman Foundation

Stephen Henry
Mr. and Mrs. Eduardo Herrera
Mr. and Mrs. Richard J. Hirrel
David Hitchcock and Kristin Maschka
Mr. and Mrs. Robert A. Hitchcock
Mr. and Mrs. Schuyler Hollingsworth, Jr.
Stacey Hoppe and Michael Williamson
I.U.O.E., Local #12 Charity
Golf Committee, Inc.
Imedra Family Foundation
A.C. Israel Foundation, Inc.
Mr. and Mrs. Neil Jack
Jacob Maarse Florists
J.W. and Ida M. Jameson Foundation
JCS Family Foundation
Mr. and Mrs. J. Christopher Jennings, Esq.
Mr. and Mrs. Wilbert C. Jones, Jr.
Maren Jorgensen
Kaiser Foundation Health Plan, Inc.
Kaiser Permanente
Mr. and Mrs. Gary Kaseff
Jim and Jean Keatley
Mr. and Mrs. Richard Keller
Kelly Reemtsen Studio, Inc.
Judith Kenehan
Mr. and Mrs. Matt Kenyon
Mr. and Mrs. Richard Kowaltshuck
Kravet Showroom
L.L. Youth Foundation
The La Canada Thursday Club Foundation
La Salle High School
Barbara and Ted Lamb
Lark Ellen Lions Charities
Las Candelas
The Lawrence Foundation
Wendy Lees and Tom Boyle
Richard Levinsohn
Amina and Richard Linn
Los Angeles Lakers Youth Foundation
Lawrence H. Luckham
Mrs. Jacob Maarse
Hank and Ana Maarse
Pamela and John Mahon
Brent and Leah Mason
Patty M. McAllister
Mr. and Mrs. John McCarthy
Mr. and Mrs. Liam McGuinness

Nancy L. McGuire
McKinley Family Foundation
Tracey McKinnon
McLeod Digital Marketing
Dennis J. McNamara and Lynne Sullivan
Claudia Menendez and Francisco Franco
Mr. and Mrs. Thomas F. Miller
Joseph Montes
Mr. and Mrs. Michael Napal
Walter W. Noce, Jr.
Michael Noll and Wendy Davis
The Kenneth T. and Eileen L.
Norris Foundation
Northrop Grumman Adelante
Onil Chibas Events
Yoko Ono Lennon
Panda Cares
The Patron Saints Foundation
Gina M. Perez, Psy.D.
Correnda Perkins and Laura Hernandez
Dr. and Mrs. Drew Pinsky
John and Barbara Poer
Curtis Pollock
Robin Popeil
Richard H. Poppenberg
Psomas
QueensCare
RBC Foundation - USA
Edmund J. Regan
Kathleen C. Regan
Ross Stores Foundation
Stacey Roth, LCSW
Paul Rusnak
Rusnak Auto Group
Mr. and Mrs. Peter Sandford
Mr. and Mrs. Greg Santilli
Barbara and David Scheper
Mr. and Mrs. Barry S. Sedlik
Mr. and Mrs. Richard Semler
Michael and Maribel Shaar
Dicky Shah and Nehal Lakhani
Mr. and Mrs. Parag Shah
Morgan Shaner
Shelter Partnership
Dr. Elizabeth Short, M.D. and Dr.
Michael Friedman, M.D.

SIG Property Management
Nathalie Simpson
Lon V. Smith Foundation
Mr. and Mrs. David S. Sniezko
Katherine Solaini
Lyn Spector
Lana G. Spraker
St. Francis Episcopal Church - Simi Valley
St. Francis of Assisi Church
St. Martin in-the-Fields Church
Maureen T. Staley
Mr. and Mrs. Thomas E. Stephenson
Mr. and Mrs. Patrick Stern
Mr. and Dr. Ian Stewart
Mr. and Mrs. Adam Stiles
Mr. and Mrs. Nick Stonnington
Strategic Retirement Partners, LLC
Mr. and Mrs. Thomas G. Suter
Janis M. Tanji Wong and Victor Wong
Chris Tawil
Linda Tawil
Mary Tawil
Simon Tawil
Andrew Teed
Sherm and Marge Telleen
Tokio Marine America
Tokio Marine Management, Inc.
Mr. and Mrs. Gary C. Toops
Maria Estela Perez Torres and Angel Torres
Mr. and Mrs. Dhaval P. Trivedi
Suzanne Tutt
United Way of Greater Los Angeles
USI Insurance Sevices, LLC
Chelisa Vagim
Mr. and Mrs. Alessandro Valentini
Mr. and Mrs. Matt Van Buren
I.N. & Susanna H. Van Nuys Foundation
Susan Chan and Oscar Varela
Maria Judith Vargas and Nora Benard
Uyen-Uyen T. Vo
Vroman's Bookstore
Mr. and Mrs. Steve Walker
Robert A. Waller Foundation
The Walt Disney Company Foundation
Western Asset Management
Mr. and Mrs. Paul Wickersham

Mr. and Mrs. Warren B. Williamson
Nancy Wilson and Geoff Bywater
The Henry A. and Cynthia G. Yost
Family Foundation, Inc.
The Donald Zonshine Family Foundation
The Gwladys & John Zurlo
Charitable Foundation





Legacy Society

Friends whose final gifts increased Hillside’s endowment

Anonymous Friends
W. Reid Allen, Jr.
The J. Robert & Marilyn F. Anderson Trust
Effie B. Baile
Iverne B. Bailey
Florence Gates Baldwin
Dorothy M. Ballo
Ellasue Barber
Jayne Barbera
Elsie Behrends
Dorothy M. Booth Charitable Trust
Helen B. Boyle
Jeanne Cox Brady
Betty E. Brainerd
Dorothy F. Briggs
Edna T. Broening
Hyman and Yolanda Brokowsky Family Trust
J & H Brophy Marital Trust
Chester and Barbara Buker
G. C. Burleigh
The Butterfield Trust
Caroline J. Cameron
Margaret Campbell
Marian P. Case
Edith E. Clancy
Vera Cleaver
Francis H. Clougherty
Ernest Worth Coan
The Coates Trust
Flora A. Collins
Westwood Collins
Alyce H. Compton
Ralph Congreve
Virginia Conlin
Emily A. Cosby
Virginia H. Crockett
Walter M. Crockett, Jr.
Dorothy Olive Curtis
Willie T. Danley
Amelia M. De Groff
Frances B. De Vincent
Diane Deininger
Lucille J. Denton
Pauline Keller Dickey
Eunice B. Donahue-Graham
Percy Dudman
Maguerite V. Duff

Phoebe J. Easton
Ethel P. Ebbinghaus
Louise Elliot
Don G. Erickson
Susan R. Evans
Emily Bennett Flintham
Alby R. Foy
Estelle Chase Freese
Margaret Gammeter
John Giessenhoff
Elaine R. Gilberson
Hugh and Joyce Gillies
Phyllis A. Glendenning
Harriet Snider Greeff
Elizabeth Greenberg
Dorothy Grist
Nancy Hammond
Louise Handy
Alda L. Harrison
Brenda L. Hastings
Mary J. Hawkins
Mary Hellis
C. A. Henkens
L. Boyd Higgins
Geraldine Hitchcock
Linna Hogan
Thomas S. Huddleson
Gomer Jones
Zelma Karnanski
Judy Kerler
William Kniering
Edmond R. Kramer
Ruth S. Kraus
Viola Larsen Marital Trust
Marion Law
Hilda Lemke
Ruth G. Lilly
Lawrence H. Linstrom
Hazel Lowell
Mary Louise Luderer
Mary Helen Lynch
Jocelyn P. McAfee
Isaac McClelland
Jeannie A. McCormick
Nolah Paine McGowan
Gregory McGuire
Grace B. McLachin

Eugene L. Milew
Josephine T. Millson
Elma B. Mock
T. Piney Moran
The Charles W. & Margaret F. Morrice Trust
Jesse D. Moses
The Mullins Family Trust
Pauline Myrick
Eric Nelson
W. G. Ogburn
Isabell Ostrom
Allan G. Peirsol
Afton Penn
Ruth Kellogg Peterson
The L. Pettit Trust
Evelyn W. Pickering
Lucile Arthur Pickering
Dorothy S. Pierose
Bernard and Judy Reiling
Helen H. Reilly
Marcella Richards
Dorothy Roberts
Ralph S. Roberts
Suzanne M. Rooney
Edward L. Royal
John M. Sadler
Grace G. Sandstrom
Howard B. Schow
Thelma Mary Schroeder
Stephen and Elzada Schweitzer
Jacqueline Smith
Dwight W. Stephenson
Sidney Stern
Robert Cresse Stranger
Rhett Peters Taylor
Alfred R. Thomas
Harold L. Thomas
Frances E. Tomlinson
Herbert S. Towne
Carol L. Valentine
Mary Louise Van Metre
Margaret Vance
Arthur B. Venberg
Herbert B. Volk
James Richard Volpe
Nancy Katharine Weier
Mildred W. Weissend

M.T. Westerbeck
M. A. Wiles
Barbara Steele Williams
Barbara Winter
Albert H. Wolf
Olga K. Wolf
William Woodhams
Gwladys V. Zurlo

Charter members whose gifts will advance Hillside’s endowment

Anonymous Friends
Mr. and Mrs. Peter Arkley
Mr. and Mrs. Frank W. Beers
Rhonda G. Bennett
Debbe and Spike Booth
Valerie Casey
Chris and Toni Christensen
Don and Sally Clark
William and Shana Culkins
Maxine Frankel
Anita Fromholz
Jay and Linda Griffey
Mary Dee Hacker and Steven Nishibayashi
Bruce and Susan Heard
Tracy and Dick Hirrel
Frank Jameson, Jr.
Chris and Alicia Lancashire
Richard and Amina Linn
Robert L. Lippert
Ralph Malmquist
Vincent G. Mazzucchelli
Patty M. McAllister
Cathy and Barry Sedlik
Mr. and Mrs. Alfred T. Smith
Lyn Spector
Sherm and Marge Telleen
Mr. and Mrs. Richard J. Ulinski
Alyce Wade Urbach
Marjorie Zahner





Donors and Supporters

Anonymous Friends
A Noise Within
A.O.C
Mr. and Mrs. Manoharan A. Aaron
Angela Abarta
DeAnne Abraham
Anthony Adame
Mr. and Mrs. Peter D. Adams
Ritvik Agarwal
Angela Mary Albarez
Matthew Aldrich
Christine Alegria
Mary Jane Alexander
Jill K. Allen and Burton Lee Harry
Daisy Allison
Mr. and Mrs. Jose Almodovar
Alpha Upsilon Chapter of
Delta Kappa Gamma
American Foundation
Michelle Amoah
Elizabeth Andalon
Ronald Anders
Mr. and Mrs. John J. Anderson
Mr. and Mrs. Richard A. Anderson
Andrew D. Bernstein
Associates Photography
Ernest F. Antonini
Arcadia Tennis Group
Janette V. Arenz
Armanino LLP
Isidro Armenta
James T. Armitage
Gayla Armstrong
Mr. and Mrs. Quincy Armstrong
Keith Arnett and Jennifer Shen
Arroyo Chop House
Assistance League of Flintridge
Assistance League of Pasadena
AT&T
AT&T Pioneers
William G. Atsumi
Ayrshire Foundation
Mr. and Mrs. Kevin T. Baaske
Mr. and Mrs. Guilford Babcock
Baby2Baby
Mr. and Mrs. Merritt P. Bailey III
Mr. and Mrs. Phillip A. Baker

Mr. and Mrs. Robert C. Baker
Mr. and Mrs. Ronald Baker
Mr. and Mrs. Ronald E. Baker
Danna Balas
David H. Ball
Bank of America
The Bar Method
Josephine A. Barbera
Dr. Mikal Barchenger
Los Angeles County Supervisor
Kathryn Barger
James Barnes
Evangelina Barrera
Patricia Bartlett
Melissa Basulto
Rev. Tommy Baughman
Mr. and Mrs. Scott Baum
Armida Baylon
Carolyn Baylon
Mr. and Mrs. Robert Beggs
Believers' Bible Study Fellowship
Mr. and Mrs. Eric Bell
Diana D. Berrones
Dale Best
Guy Beutelschies
Bhavna Bhakta
Mr. and Mrs. Matthew Bickell
Bies Family Foundation
Big Sunday
Felicia Billups
Brian Biranga
Gregg Bissonette
Matt Bissonette
Dr. Neda Black
Mr. and Mrs. Kevin G. Blake
Mr. and Mrs. John A. Blitch
Bloomfield Creamery
BMO
Stella Bonaventura
Debbe and Spike Booth
Mr. and Mrs. Morgan Booth
The Otis Booth Foundation
BoozeFighters
Born To Be Loved
Mr. and Mrs. Bruce Bornhurst
Carmela Bozulich
Galinda Braga

Maggie Brandow
Mr. and Mrs. Peter J. Breckheimer II
Mr. and Mrs. Gerald Brennan
Teri A. Breschini
Jennifer Brian and Chet Fenster
Mr. and Mrs. Donald Briggs
Bright Horizons/UCLA Westwood
Muffett Brinkman
Mr. and Mrs. Chip Brooks
David Brooks
Tempe B. Brooks
Annie Brose and Chris Anzalone
Mr. and Mrs. Peter Browne
Jacqueline T. Broxton
Nancy Brunet
Pamela Bryant
Dennis Buckley
Anne Buettner
Margarite Buitrago
Kim Bullard
George V. Bullock
Mr. and Mrs. Leonard C. Bunyan
Burbank Joslyn Senior Center
Quilting Group
Anna M. Butturini, M.D.
C.W. Driver Companies
Victor Caballero
Claudia Calandrino
Mr. and Mrs. Frank Calandrino
Camco Design & Construction
Campbell Hall Advisor Group
Campbell Hall Episcopal School
Cantor Fitzgerald Relief Fund Administration
Lynda M. Canzoneri
Valerie Casey and Lawrence E. Uhl
Jacqueline Jacobs Caster
Laura Castillo
Chandler School Cub Scout 78 Wolf Den
Mr. and Mrs. Peter Chang
Sandy Chautran and William Luong
Gia Chemsian
Lerer Chen
Judy Chen
Peitty Chou and Paul Wong
Congresswoman Judy Chu
Church of the Transfiguration - Arcadia
Cigna HealthCare

Clairbourn School
Ceinwyn Clark
Don and Sally Clark
Clipper Aviation
Code Rea
Mr. and Mrs. David Coher
Mr. and Mrs. Todmund E. Cole
Carlos F. Collard
Collins & Collins LLP
Comcast NBCUniversal Foundation
Community Bible Church
Comprehensive Dermatology
Michael J. Connell Foundation
ContinuumCloud
Dr. Bree E. Cook
Mr. and Mrs. John L. Cooper
Mr. and Mrs. James John Coppack
Mr. and Mrs. Joseph Corrente
Josette Corro
Joseph M. Costa
Mr. and Mrs. Richard W. Cota
Joseph Courtney
Mr. and Mrs. Jason Cozby
Hilary Crahan
Judith Craig Williamson
Janet Crane
Create Now
Creative Arts Group
Mr. and Mrs. Tim Crisci
Mr. and Mrs. Michael Cronin
Kathryn Cross
Azar Dabiri
Bob and Janet Daily
Bobby Dalbeck
Phyllis D'Ambra
DataPage Incorporated
Charles Davis
Constance Davis
Kristina Davis
Mr. and Mrs. Philip Davis
Davis Wright Treemaine LLP
Laurie De Freitas
Anna M. De Groote
Thomas De Lorenzo
Mr. and Mrs. Christopher De Mond
Ellen C. Deal
Lesley M. Deck

Mr. and Mrs. R. J. Dedeaux
Marilyn Delanoeye
Department of Child and Family Services
Ani Derhartounian
Lauralyn Deringer
The Carl & Roberta Deutsch Foundation
Mr. and Mrs. John E. DeWitt
Damon Didawick and Andrew Stoner
Mr. and Mrs. John Diehl
Mr. and Mrs. Kirk D. Dillman
Joy DiMartino
Jeanette Dinwiddie-Moore
Mr. and Mrs. Bob Dion
Mary Ditt
Dianne Dixon
B.J. Doerfling
Stephanie Doerning
Robin Dorman
Peggy Dowswell
Katrin B. Doyle
Mr. and Mrs. Kenneth Drew
Katie Driscoll
Heidi Dumke
Duo Studio
Linda Dupuis
Miranda Eads
Carleen Eaton
Frank Edward
William B. Eichler and Edison Barbosa
Ryan Eisenberg
Forrest Eldred
Barbara J. Eliades and Scott H. Dunham
Gail G. Ellis Foundation
Helen S. Elson
Carmela M. D. Emanuele
Susan Engle
The Episcopal Church of the Ascension
Episcopal Church of the Advent
Dr. Annette Ermshar and Dan Monahan
Mr. and Mrs. Andrew A. Esbenshade
Adam Espinoza
Carrie Espinoza
Elena Espinoza
Eva Lin Realty
EyeMed
Kliegl Family
Mr. and Mrs. James Farha

Heather Farr
Mr. and Mrs. Ross Farrell
Farrow & Ball
Rebecca Fearing and Sherman Lee Sartin
Brenda Feldman
Regine Feldman
Kathryn W. Ferguson
Lucille Ferrante
Mr. and Mrs. James Filippatos
First Congregational Church of Pasadena
Dr. and Mrs. Michael Fishbein
Dee F. Fisher and Mark S. Martinez
Mr. and Mrs. Robert A. Fisher
Mario and Shelly Fiumani
Mr. and Mrs. Peter H. Flaherty
Mr. and Mrs. Brad Fleiss
Mr. and Mrs. Louis Fleming, Jr.
Mr. and Mrs. Richard A. Fletcher
Jeannie Flint and David Werbelow
Mr. and Mrs. David L. Flores
Mr. and Mrs. Gary Floyd
Eric Fong
Dr. and Mrs. Henri Ford
Forever Kids
Ira and Barbara Forkish
Steven Foster
Foster Love
Louise Fox
Fox Alternative Entertainment, LLC
Fox Child Development Center
Juan Franco
Jim Franke and Steve Bialecke
Friends of Foster Children
Brett Furrey
G3 Academy of Martial Arts
Arthur J. Gallagher & Co.
Mr. and Mrs. Steve Galletly
Mary Ann Garcia
Mr. and Mrs. Robert H. Gaskill
Mr. and Mrs. Jeff Gavitt
Geffen Playhouse
Kumiko Gerber
Jeannette F. Gerk
Mr. and Mrs. Brian A. Geurts
Kathaline Gibbons
Mr. and Mrs. Stephen E. Gill
Helen Jean Girard





Donors and Supporters

Girl Scouts Troop 4961
Dr. and Mrs. John W. Given
Ed and Shari Glazer
Max H. Gluck Foundation
Goehner Accountancy
David C. Gogerty
Lizabeth Gomez
John S. Gong
Ronald Gong
Sandra Gong
Shari Gong
Gloria Gonzalez
Jessica Gonzalez
Good SamariTots
Ezmaralda Gordon
Marc J. Gorlin
Gourmet Blends
Jeremy Gozzip
Grace Episcopal Church - Glendora
Lesley Grainer
Constance Jo Gray
Greater Horizons
The Green Foundation
Green Street Restaurant
Scott Gregg
Yessenia Guerra
Esteban Guillen
Jennifer Gurrola
Kimberli Gurvitz
Sara Jane and Alfredo Guzman
Marisela Guzman
H100
Mary Dee Hacker and Steven Nishibayashi
Barbara M. Hacker
Nicholas Hadjis
Mr. and Mrs. Peter V. Haight
Brian Halliday and Margaret Otto
Tamera Hanna
Tania Hanna
Mr. and Mrs. Tom Hansen
Mr. and Mrs. John Harabedian
Mia Harboe
Pattianna Harootian
Mr. and Mrs. Daniel Harper
Mr. and Mrs. Ron Harrington
David Hawley
Health Net

Bud and Barbara Hellman Foundation
Abby Helman
Mr. and Mrs. Robert A. Henkens II
Mr. and Mrs. Benjamin P. Henley
Stephen Henry
Mr. and Mrs. Eduardo Herrera
Nilda Herrera
Mr. and Mrs. Steve Herzberg
Mr. and Mrs. John J. Higgins
High Point Academy
The Higueros Family
Sheryl Hill
Hillsides Guild
Hillsides Volunteer Network
Mr. and Mrs. Dale Hines
The Hire
Mr. and Mrs. Richard J. Hirrel
David Hitchcock and Kristin Maschka
Mr. and Mrs. Robert A. Hitchcock
Letitia Ho
Mr. and Mrs. Bruce A. Hoffman
Mr. and Mrs. William Hohensee
Mr. and Mrs. Schuyler Hollingsworth, Jr.
Thomas Holm
Diane Hong
Margaret Hoofman
Stacey Hoppe and Michael Williamson
Jessica Hopper
Mr. and Mrs. Mark Hough
Catherine Howard
Mr. and Mrs. Richard R. Howe
Emily Hsu
Monica Hubbard
Rev. and Mrs. Norman Hull
Karen Huss
Hutto-Patterson Charitable Foundation
Belinda Huy
Willis Hy
JeanEtte Y. Hyatt
I.U.O.E., Local #12 Charity
Golf Committee, Inc.
Mr. and Mrs. Le Roy Ichida
Rose Iclisoy
Tiffany Iino
Imedra Family Foundation
Mary Beth Ingham
Invicta Recovery Center

A.C. Israel Foundation, Inc.
Mr. and Mrs. John Itamura
Mr. and Mrs. Neil Jack
Mr. and Mrs. Isiah Jackson
Jacob Maarse Florists
J.W. and Ida M. Jameson Foundation
JCS Family Foundation
Michael P. Jelf
Mr. and Mrs. J. Christopher Jennings, Esq.
Katherine Jennings
Janet Johnson
Janice Johnson
Paula L. Johnson
Mr. and Mrs. Davey Johnstone
Rasean Jones
Calvin Jones, Jr.
Mr. and Mrs. Wilbert C. Jones, Jr.
Mr. and Mrs. Doug Jorgensen
Maren Jorgensen
Kaiser Foundation Health Plan, Inc.
Kaiser Permanente
Eryn Kalavsky
The Kalavsky Family
Jinsoo Kang
Jennifer Kantor
Mr. and Mrs. Gary Kaseff
Hayley Katz
Seta Kazandjian
Jim and Jean Keatley
Carlota B. Keely
Mr. and Mrs. Richard Keller
Erliene Kelley
Shanon Kelley
Kelly Reemtsen Studio, Inc.
Judith Kenehan
Alison Kenyon
Mr. and Mrs. Matt Kenyon
Lyssa Kerrigan
Kevin Kevin
Jeffrey Keyes
Nicole Keyllian
Kidspace Children's Museum
Jennifer Killam
Angela Kim
King's Seafood Company
Kiwanis of the Verdugos
Danielle Klausner

Mr. and Mrs. Ira Klein
Caroline Knedel
Joan Kobori
Gayane Kostanyan
Mr. and Mrs. Richard Kowaltshuck
Julia Kozlov
Mr. and Mrs. Paul Kral
Viva Krasinski and John Ceballos
Kravet Showroom
Mr. and Mrs. David Krohn
Kathleen T. Kubota
Marian M. Kubota
Ryo Kujime
L.L. Youth Foundation
The La Canada Thursday Club Foundation
La Jolla Beach & Tennis Club
La Salle High School
Grant Lam
Barbara and Ted Lamb
Christina Lambert
Maryjo Lang
Mr. and Mrs. Brett R. Langrell
Arthur Langton
Lark Ellen Lions Charities
Las Candelas
John Law
The Lawrence Foundation
Mr. and Mrs. Harry Lee
Marsha Lee
Raymond Lee, D.D.S.
Wendy Lees and Tom Boyle
Richard Levinsohn
James Lim
Alice Lin
Amina and Richard Linn
Anthony R. Lipp
Mr. and Mrs. J. R. Liset
Mr. and Mrs. Bingham F. Liu
Naomi Locatell
Iris Lopez
Los Angeles Lakers Youth Foundation
Los Angeles Philharmonic
Gail Lovejoy
Howard Lovus
Gina Loyonnet
Lawrence H. Luckham
Susan Lum

Gwendolyn Lynn
William J. Lyons
Hank and Ana Maarse
Mrs. Jacob Maarse
Suzanne Mace
Cindy Macias
Macy's West, Inc.
Barbara Madden
Pamela and John Mahon
Mr. and Mrs. Earl Maize
Jose Mancia
Mr. and Mrs. Donald O. Manning
Christopher Martin
Judy Kenyon Martin and Dick Martin
Roberta Martin
Mr. and Mrs. Grady D. Martine
Mr. and Mrs. Juan Martinez
Nathan Martinez
Mr. and Mrs. William P. Martone
MARVAL REX LLC
Jane Maschka
Sarah Maschka
Brent and Leah Mason
Mark Mastromatteo
Mr. and Mrs. Luca Mazza
Patty M. McAllister
McCalls Meat & Fish
Margaret McCarte
Mr. and Mrs. Edward McCarthy
Mr. and Mrs. John McCarthy
Jacquelyn McCroskey
Patricia McFarland
Mr. and Mrs. Liam McGuinness
Nancy L. McGuire
McKinley Family Foundation
Tracey McKinnon
Vincent M. McLeod and Elsa G. Lopez
McLeod Digital Marketing
Dennis J. McNamara and Lynne Sullivan
Marc McNeil
Amber Young Medina
Marie Mehlretter
Elizabeth Mejia
Leona Mendez
Claudia Menendez and Francisco Franco
Maria Mercado
Mr. and Mrs. Ronn Mercado

Naomi Merken
Merle Norman Cosmetics of Montrose
Niki Merrigan
David Metzinger
Lisa Metzinger
Lynn Metzinger
Rob Michaelis
Mr. and Mrs. Nick Mihalopolos
Carlene Miller
Mr. and Mrs. Corey Miller
Frederick and Angela Miller
Mr. and Mrs. Thomas F. Miller
Mr. and Mrs. Robert E. Mills
Miracle Spring Resort & Spa
Mission Tile West
Jason Miyake
Nancy Molenda
Danielle Molina
Mr. and Mrs. Jose M. Molina
Mr. and Mrs. Juan Carlos Montenegro
Joseph Montes
Alyson D. Moore
Jane Moore
Victoria S. Mordecai
Michael Morris
Jennifer Muirhead
Mary Mullen
Mr. and Mrs. Gerald Munoz
Margaret D. Murphy
Raymie Muzquiz
My Own Gear
Dr. and Mrs. Lawrence W. Myers
Dr. Nima and Teuta Naghshineh
Charlene Nakamura
Felicia Nalivansky
Timothy Naney
Mr. and Mrs. Michael Napal
Michelle Naples
National Charity League - Class 2028
Jane Neely
Lynn M. Neill
Charlene Nguyen
Paula Nishibayashi
Walter W. Noce, Jr.
Michael Noll and Wendy Davis
Mayra Noriega
The Kenneth T. and Eileen L. Norris Foundation





Donors and Supporters

Northrop Grumman
Peri V. O'Connor
Olio E Limoine Ristorante
Mr. and Mrs. Ricardo Olivarez
Patricia A. Olivieri
Davina Olsen
Mr. and Mrs. Nigel Olsson
Onil Chibas Events
Yoko Ono Lennon
Kevin Orellana
David Bryan Osborne
Mr. and Mrs. Norman Owens
Maria Palma-Aguilar
Panda Cares
Paramount Pictures
Parkway Grill
Catherine Partridge
Pasadena Ice Skating Center
Pasadena Tournament of Roses Association
Janet Pasker
The Patron Saints Foundation
Mr. and Mrs. Edward Patterson
Mr. and Mrs. Russell A. Patterson
Robert Paud
PBWS Architects
Mr. and Mrs. Gregory Peacock
Mr. and Mrs. Dennis M. Pederson
Anita Peralez
Gina M. Perez, Psy.D.
Correnda Perkins and Laura Hernandez
Jean W. Perry
Mr. and Mrs. Ray Phillips
Pie 'N Burger
PIN USA, Inc.
Patricia V. Pinney
Dr. and Mrs. Drew Pinsky
Steven Piorkowski
Mr. and Mrs. George C. Platisa
Pledgeling Foundation
Cynthia Pocklington
Alexandra Poer
John and Barbara Poer
Susannah E. Poer
Curtis Pollock
Carol A. Pontrelli
Robin Popeil
Richard H. Poppenberg

Breana Powers
Mr. and Mrs. John Pozza
Scott Prankie
Brian Peralez
Jonathan Primuth
Deborah Proctor
Psomas
Tadea Pylco
QueensCare
Jennifer Quinn
Mr. and Mrs. John H. Quinn
Molly Quinn
Anthony Quinton
Karen Ann Ramsey
Janice Raney
RBC Foundation - USA
Edmund J. Regan
Kathleen C. Regan
Carolyn Repko
Sandford Resig
Revolution Office
Sindee and Steve Riboli
Robert Half Talent Solutions
Lisa Robertiello
Donald Roberts
Alejandra Rodriguez
Mr. and Mrs. Oscar Rodriguez
Pam Rodriguez
Marco Rodriguez-Suarez
Sarah Rogers and Matthew Krappman
Thomas Rogers
Mr. and Mrs. Steve Rolfe
Noreem Romano
Carolina Romero
Karen Rosen
Ross Stores Foundation
Tena Rosser and Raz Schionning
Sarah Rostoker
Dr. and Mrs. R. Fernando Roth
Stacey Roth, LCSW
Jonathan Rothberg
Lisa A. Rothstein
Jean Rowe
Rebecca Rowland
Andrew Rudikoff
Kristin Rueve
Mary Ann W. Rush

Rusnak Auto Group
Paul Rusnak
Shannon Rutecki
Mr. and Mrs. Jason S. Ryan
Mr. and Mrs. George Saavedra
Mr. and Mrs. George Sakellariou
San Francisco Opera
Mr. and Mrs. Peter Sandford
Mr. and Mrs. Nerses Sanossian
Santa Anita Park
Stephanie M. Santillan
Mr. and Mrs. Greg Santilli
Robert Santilli
Arlene Saria
Mr. and Mrs. Andrew Sarkissian
Ilse Savelli
Kosuke Sawada
Marrick E. Sayers, Ph.D.
Elizabeth Schairer
Mr. and The Hon. David Scheper
Valerie Schmidt
Mr. and Mrs. Steve Schneider
Jody Schultz
Mr. and Mrs. Robert Sedler
Mr. and Mrs. Barry S. Sedlik
Mr. and Mrs. Richard Semler
Katie Serror
Donald and Michelle Servan
Michael and Maribel Shaar
Dicky Shah and Nehal Lakhani
Mr. and Mrs. Parag Shah
Tammy Shain
Morgan Shaner
Sharp Seating Company
Shelter Partnership
Colette Shepard
Susan Sherman
L Stanton Shipley
Dr. Elizabeth Short, M.D. and Dr. Michael Friedman, M.D.
Ashley Showell
Judith Shuster
SIG Property Management
Gary Sikkens
Joshua Silver
Kristy Simone
Caryl Simpson

Nathalie Simpson
Julie Sivilay
Katie Skelton
Skinpeccable
Mr. and Mrs. Scott Slater
Mr. and Mrs. Dennis D. Slattery
The Smith Brothers Restaurants
Lon V. Smith Foundation
Gail Smith
Mary Smith
Mr. and Mrs. Roger E. Smith
Smitty's Grill
Robert Smurlo
The Rev. Canon Edward Sniecienski
Mr. and Mrs. David S. Sniezko
Katherine Solaini
Mr. and Mrs. Alan Somers
Alina Sookasian
Mr. and Mrs. Paul Bergman
South Hills Academy
South Pasadena Royal Lions Club
Susanne Spangler and Eric Bell
Lyn Spector
Yvette Spencer
Lana G. Spraker
Donna M. Spurrell
St. Edmund's Church
St. Francis Episcopal Church - Simi Valley
St. Francis of Assisi Church
St. Martin in-the-Fields Church
St. Martin-in-the-Fields Church - Canoga Park
St. Mary's Episcopal Church
St. Philip's the Apostle School
Maureen T. Staley
Quynh Stanley
Stantec
Natalie Star
Mr. and Mrs. Robert Stellwagen
Mr. and Mrs. Alan Paul Stelzer
Christian Stendel
Mr. and Mrs. Thomas E. Stephenson
Mr. and Mrs. Patrick Stern
Mr. and Dr. Ian Stewart
Mr. and Mrs. Adam Stiles
Susan Stone

Mr. and Mrs. Nick Stonnington
Warren C. Stout, M.D.
Strategic Retirement Partners, LLC
Levi Strauss Foundation
Cheri Strelow and Peter Soelter
Studio of the Empress
Summit House Restaurant
Xi Sun
Olga Suro
Mr. and Mrs. Thomas G. Suter
Mr. and Mrs. Kaoruhiko Suzuki
Mr. and Mrs. Sean K. Suzuki
Mr. and Mrs. Roosevelt T. Suzuki
Claudia Sysock
Takeda
Karen Tamis
Lisa Tanaka O'Malley
Karen Tanji
Janis M. Tanji Wong and Victor Wong
Lori Tappe
Chris Tawil
Linda Tawil
Mary Tawil
Simon Tawil
Medalit Tay
Bishop John H. Taylor and Mrs. Kathleen O'Connor
Mr. and Mrs. Thomas Techentin
Andrew Teed
Sherm and Marge Telleen
Tempest Capital Management
Ten Thousand Villages of Pasadena
Diana Thai
Cherry Rhodes and Ladd Thomas
Thomas J Schulte, An Accountancy Corp.
Tokio Marine America
Tokio Marine Management, Inc.
Mr. and Mrs. Gary C. Toops
Maria Estela Perez Torres and Angel Torres
Alison Treleaven
Jocelyn Trigueros
Trina Turk
Mr. and Mrs. Dhaval P. Trivedi
Sandra Troup
Helen Tsuda
Suzanne Tutt

Union Salon
United Way California Capital Region
United Way of Greater Los Angeles
Heather Upton
USI Insurance Sevices, LLC
Chelisa Vagim
Mr. and Mrs. Alessandro Valentini
Mr. and Mrs. Matt Van Buren
Mr. and Mrs. James R. Van Gaasbeek
I.N. & Susanna H. Van Nuys Foundation
Joshua Van Vranken
Marianne I. Van Zeeland
Mr. and Mrs. John Vandevelde
Susan Chan and Oscar Varela
Malinda Vargas
Maria Judith Vargas and Nora Benard
Mr. and Mrs. Richard Vasquez
Gabriel Vazquez
Chris Vela
Mr. and Mrs. Paul A. Vert
Mr. and Mrs. Vincent Villagran
Cecilia Villasenor
Vittoria Coffee USA
Teresa Vo
Uyen-Uyen T. Vo
Vroman's Bookstore
Mr. and Mrs. Victor Wagoner
Monica Wahl
Mr. and Mrs. Steve Walker
Robert A. Waller Foundation
The Walt Disney Company Foundation
Warner Bros.
Mr. and Mrs. William Dexter S. Warren
Edward Washatka
Dr. and Mrs. William Watkins
David D. Watts
Mary Weedman
Mr. and Mrs. Bradford Weirick
Marianne A. Weisel
Aaron and Valerie Weiss
Mary Weiss
Kimberley Weleba
Western Asset Management
Gary Westphal
Westridge School for Girls
Elizabeth White



Donors and Supporters

Susan Whittaker
Mr. and Mrs. John Wickersham
Mr. and Mrs. Paul Wickersham
Erika Williams
Alyce Williamson
Fred Williamson
Wilson Elser LLP
Nancy Wilson and Geoff Bywater
Shirley A. Wilson
Ron Withers
Judy Wollman
Darren Wong
Mr. and Mrs. Kevin Wong
Ursula Wong
Mr. and Mrs. Victor M. Wong
Mr. and Mrs. William Wong
Rev. George F. Woodward III
Mr. and Mrs. David Worrell
Cathy Wullschleger
Alyson Wycoff
Mr. and Mrs. Edward Xanders
Mr. and Mrs. David Yamaoka
Robert Yap
Grace Yates
Thomas R. Yoder
The Henry A. and Cynthia G. Yost
Family Foundation, Inc.
Mr. and Mrs. Garret Zabel
Laura Zabel
Cira Zamora
Susan Zevnik
Amy Zheng
Yanrong Zhu
Mr. and Mrs. Barry Ziehl
David Zoltan
The Donald Zonshine Family Foundation
The Gwladys & John Zurlo
Charitable Foundation





Hillsides

CREATING LASTING CHANGE