



Where Healing Takes Root



Hillsides Annual Report
2024 - 2025

Letter from the CEO

A Century of Roots, A Future Still Growing

Dear Hillside Community,

For more than a century, Hillside has planted deep roots in the lives of children, youth, and families, cultivating stability, healing, and opportunity for generations.

Over the past year, I've been reminded again and again that meaningful change happens through steady cultivation. Like the roots of a strong tree, it takes patience, care, and the dedication of people who believe deeply in the work before them.

At Hillside, those people are our team members.

Every day, our staff bring skill, empathy, and unwavering commitment to children and families who are navigating some of life's most difficult moments. They create environments where healing can take hold and where youth can begin to imagine new possibilities for their future. Their dedication is the foundation of everything we do, and it is one of the reasons Hillside continues to be a place where people choose to build their careers and return to our mission again and again. Across community-based

programs, residential and therapeutic care, foster care and adoption, and support for young adults transitioning toward independence, Hillside works every day to nurture stability, resilience, and hope.

This work is made possible by the extraordinary community that surrounds us. Donors, volunteers, board members, and advocates all play a vital role in helping Hillside grow its impact and extend its reach. Your support allows us to continue planting seeds that will shape brighter futures for generations to come.

As you explore this year's report, you will see the many ways those seeds are taking root. You will read stories of young people finding their strength, families rebuilding stability, and team members whose dedication makes transformation possible.

After more than 113 years, Hillside continues to grow because of the people who believe in our mission and help carry it forward. Thank you for being part of this community and for helping cultivate a future filled with lasting change.

With love and appreciation,
Stacey Roth, LCSW
Chief Executive Officer, Hillside



About Hillside

For more than 113 years, Hillside has been creating spaces where children, youth, and families can heal, grow, and thrive. What began in 1913 on a wooded campus in Pasadena - surrounded by open grounds where children could feel safe and simply be children - has grown into a network of programs reaching communities across Southern California.

The campus remains an important part of Hillside's story, a place where generations have found safety, structure, and care. But over time, the seeds planted there have continued to grow, extending outward into homes, schools, and neighborhoods where families need support most.

Today, Hillside provides trauma-informed mental health care, nurturing environments, and long-term guidance through programs

that span early childhood to adulthood. Our services include community-based care, residential and day treatment, foster care and adoption, and support for youth transitioning into independence.

Whether on campus or in the community, the work remains the same: meeting people where they are, strengthening relationships, and tending the conditions that allow healing to take root.

“The seeds planted on our campus more than a century ago are now taking root in communities across Southern California.”

“What began as a place of refuge has grown into a network of care reaching families wherever they are.”

About this report

This report reflects a year of growth across the Hillside community.

For more than a century, Hillside has been planting seeds of safety, belonging, and opportunity - tending them with patience and care so children, youth, and families can build stronger futures. Some of this work takes place on our historic campus. Much of it now happens in homes, schools, and neighborhoods across the region, where support can reach families earlier and remain alongside them longer.

The stories and impact shared here represent what has taken root over the past year, and the many people who help nurture that growth. Hillside's team members, volunteers, donors, and community partners each play a role in tending this work, helping the seeds planted generations ago continue to grow in new places and new ways.



Who We Serve

Community: Where Healing Takes Root

Every year, thousands of children, youth, young adults, and families turn to Hillside during moments of uncertainty, transition, or crisis. Some are seeking safety and stability. Others are looking for guidance, resources, or a trusted partner who will walk beside them as they rebuild their lives.

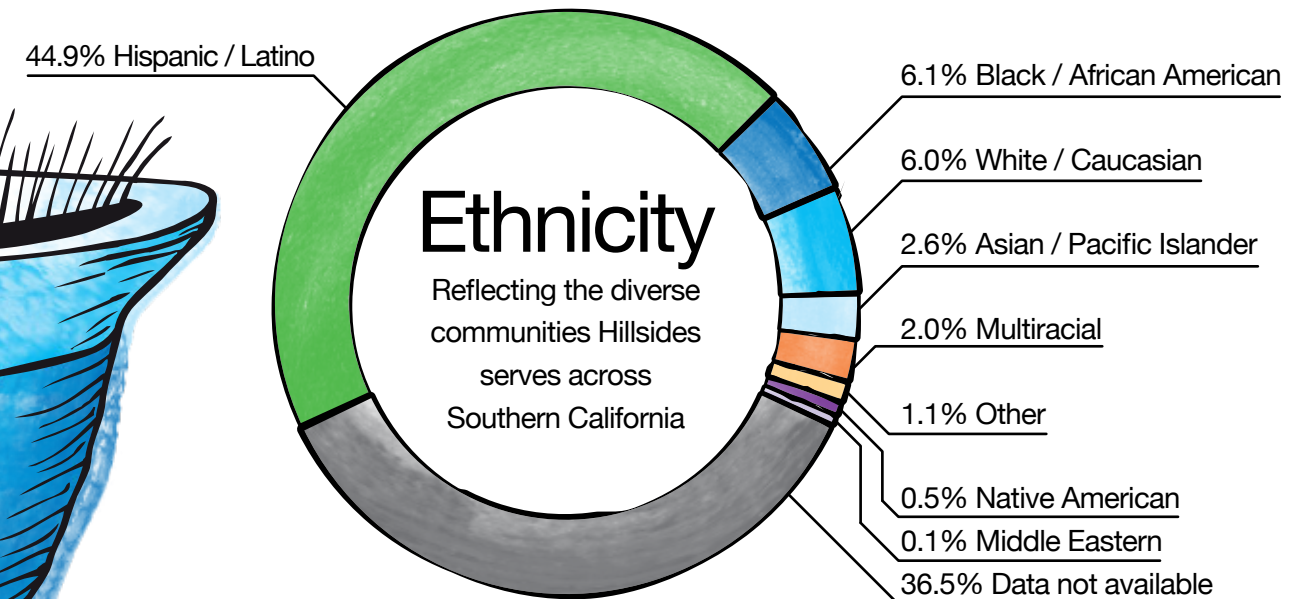
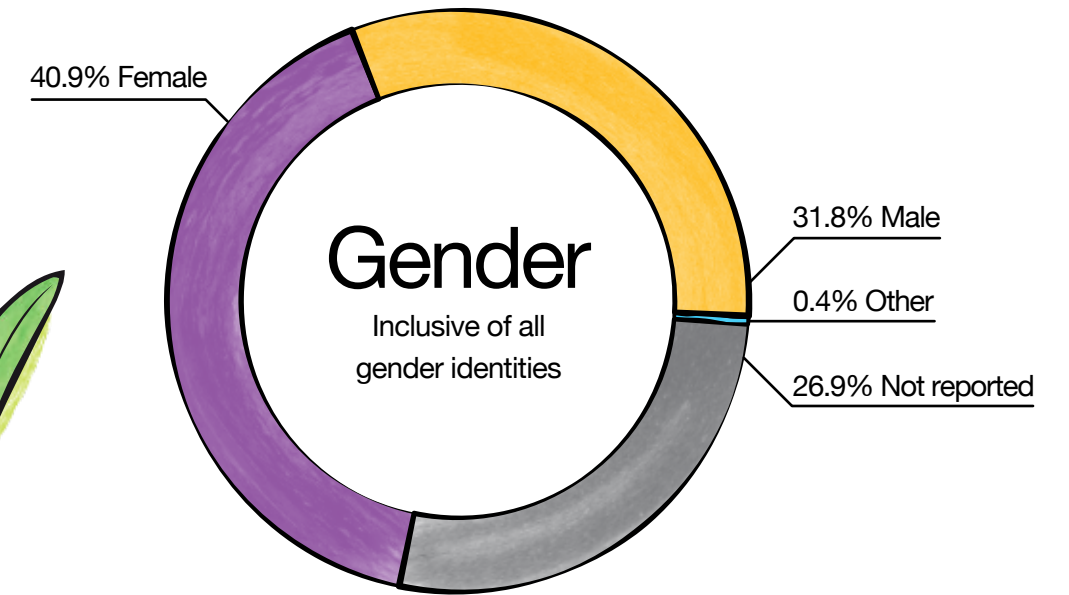
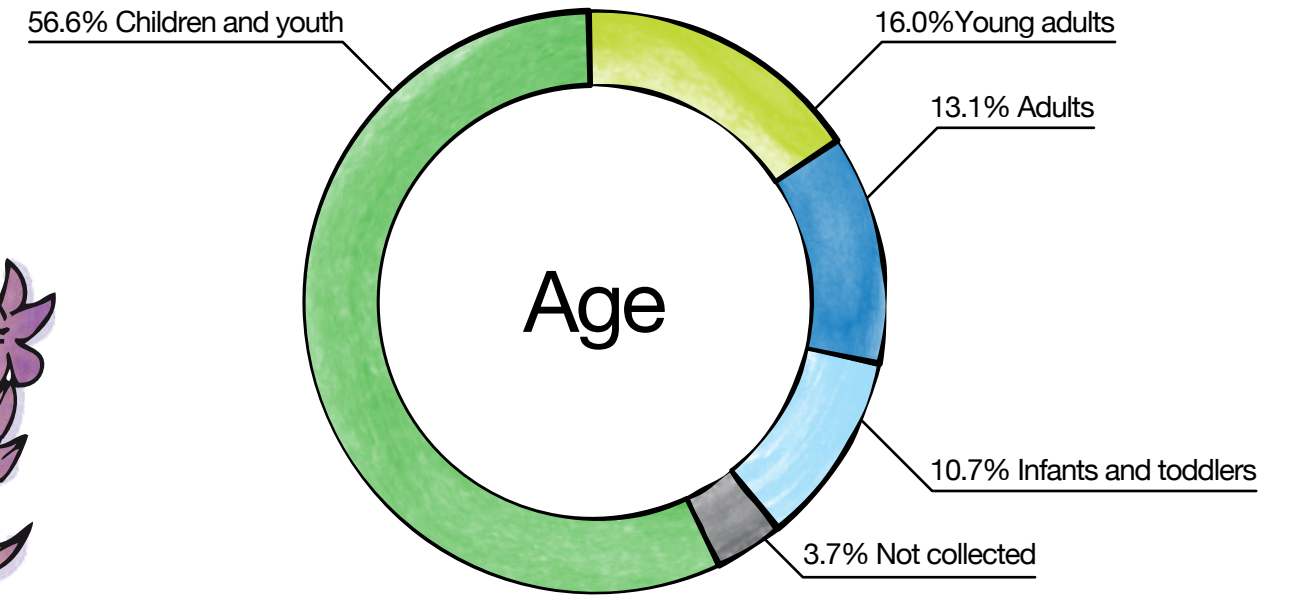
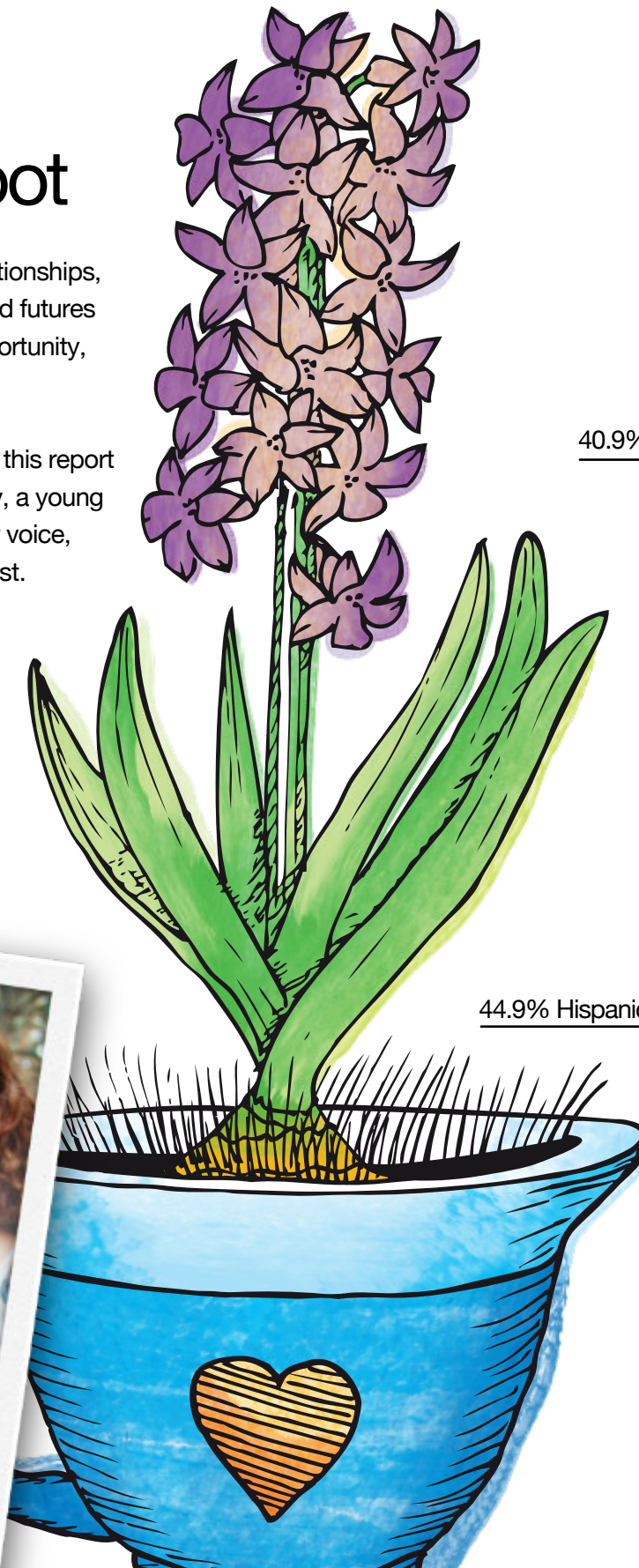
For more than a century, Hillside has responded by meeting people where they are, whether that be on our historic campus, in homes and schools, or in neighborhoods across Southern California. What began as a single place of refuge has grown into a broad continuum of care that reaches families earlier and supports them longer.

Today, the majority of Hillside's work happens in the community. More than three-quarters of the individuals we serve receive care beyond our campus through behavioral health services, family support programs, housing assistance, and workforce development. These programs extend the roots of Hillside's mission into the everyday spaces where families live, learn, and grow.

Across every program, the goal remains the same: to nurture

stability, strengthen relationships, and help individuals build futures grounded in safety, opportunity, and belonging.

Behind every number in this report is a child finding stability, a young person discovering their voice, or a family rebuilding trust. These moments, often quiet but deeply meaningful, are where healing begins and new possibilities take root.



This Year at a Glance

45,214
hours of mental
health treatment
and clinical
care provided

12,000
children, youth,
and families
supported through
Hillsides programs

9,462
clients and families
received community-
based behavioral health
services and whole-
person support

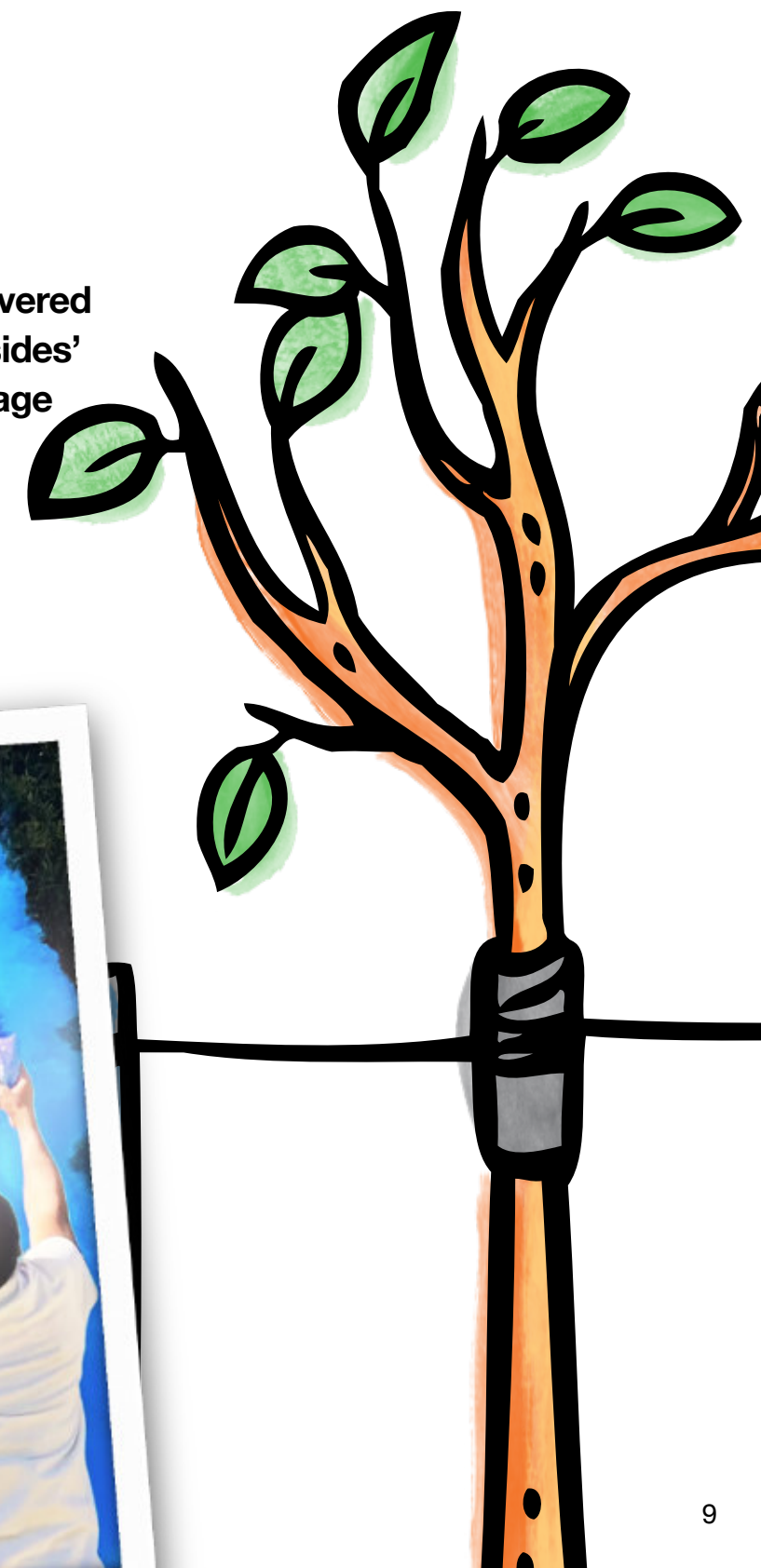
1,703
gifts provided by
donors, including
financial support,
in-kind contributions,
and essential items

5,527
services delivered
through Hillsides'
transitional-age
youth
programs

832
children, youth,
and families
participated in
residential and
day treatment
programs

578
young adults
received housing
and transition
support through
Youth Moving On

445
individuals impacted
through foster care
and adoption services



Tending Stability, One Family at a Time

Healing often begins in the everyday spaces where families live and grow. Through Family Resource Centers, Hillside meets parents and children in their homes, schools, and neighborhoods - planting small seeds of support that, over time, help stability take root. This work reflects the quiet stewardship that has defined Hillside for more than a century: meeting families where they are and nurturing progress step by step.

Community-Based Services

Diana's Story: Strength in Motion

When Diana entered Family Preservation services after a domestic violence investigation closed, she chose to participate voluntarily, determined to create a safer path forward for her children. A mother of two, she was navigating sudden financial strain after a car accident left her unable to work, and she faced the possibility of losing her home.

From the start, Diana met her therapist with honesty and determination. Together, they focused on immediate needs: housing, childcare, and access to food and therapy resources, while also strengthening the support systems around her. One simple suggestion to reach out to her church community

became a turning point; members stepped in to help move her belongings and remind her she wasn't alone.

Even after the family lost their home, Diana continued moving forward. With emergency housing support and consistent visits, she reconnected with relatives and secured permanent housing.

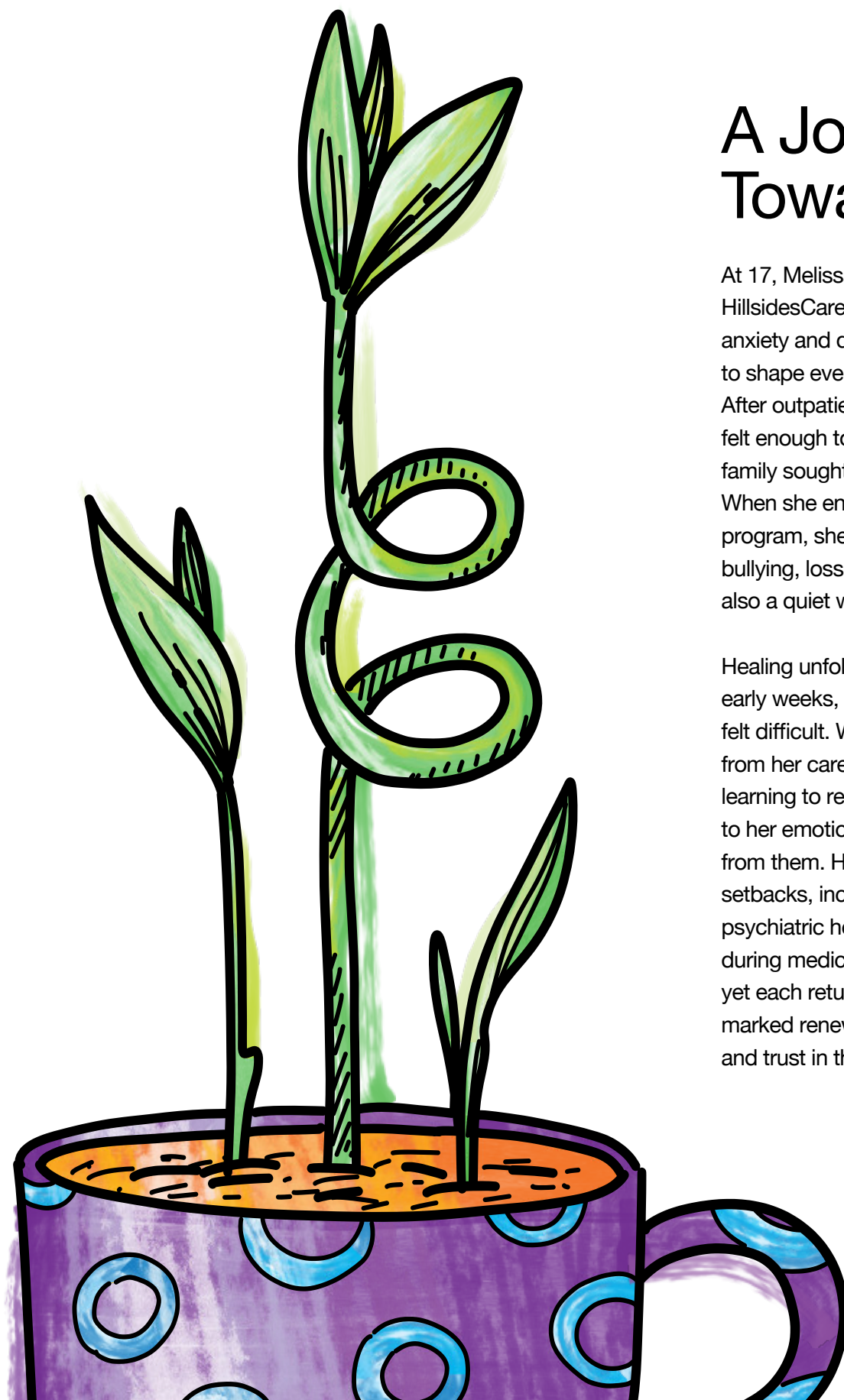
Today, she remains connected to Hillside, recently returning to seek services for her older son - carrying forward the same sense of stability and belonging that began to take root during her time in the program.



Residential and Day Treatment

Creating Space for Healing to Grow

Some young people need time, structure, and deeper support before healing can take root. Hillside's Residential and Day Treatment programs provide that foundation, offering consistent care during moments of profound difficulty while helping children and youth build the tools to move forward with confidence.



A Journey Toward Stability

At 17, Melissa arrived at Hillside'sCares during a time when anxiety and depression had begun to shape every part of her daily life. After outpatient support no longer felt enough to keep her safe, her family sought a higher level of care. When she entered the residential program, she carried the weight of bullying, loss, and isolation - but also a quiet willingness to try.

Healing unfolded gradually. In the early weeks, even rest and focus felt difficult. With steady support from her care team, she began learning to recognize and respond to her emotions rather than retreat from them. Her journey included setbacks, including a brief psychiatric hospitalization during medication adjustments, yet each return to treatment marked renewed strength and trust in the process.

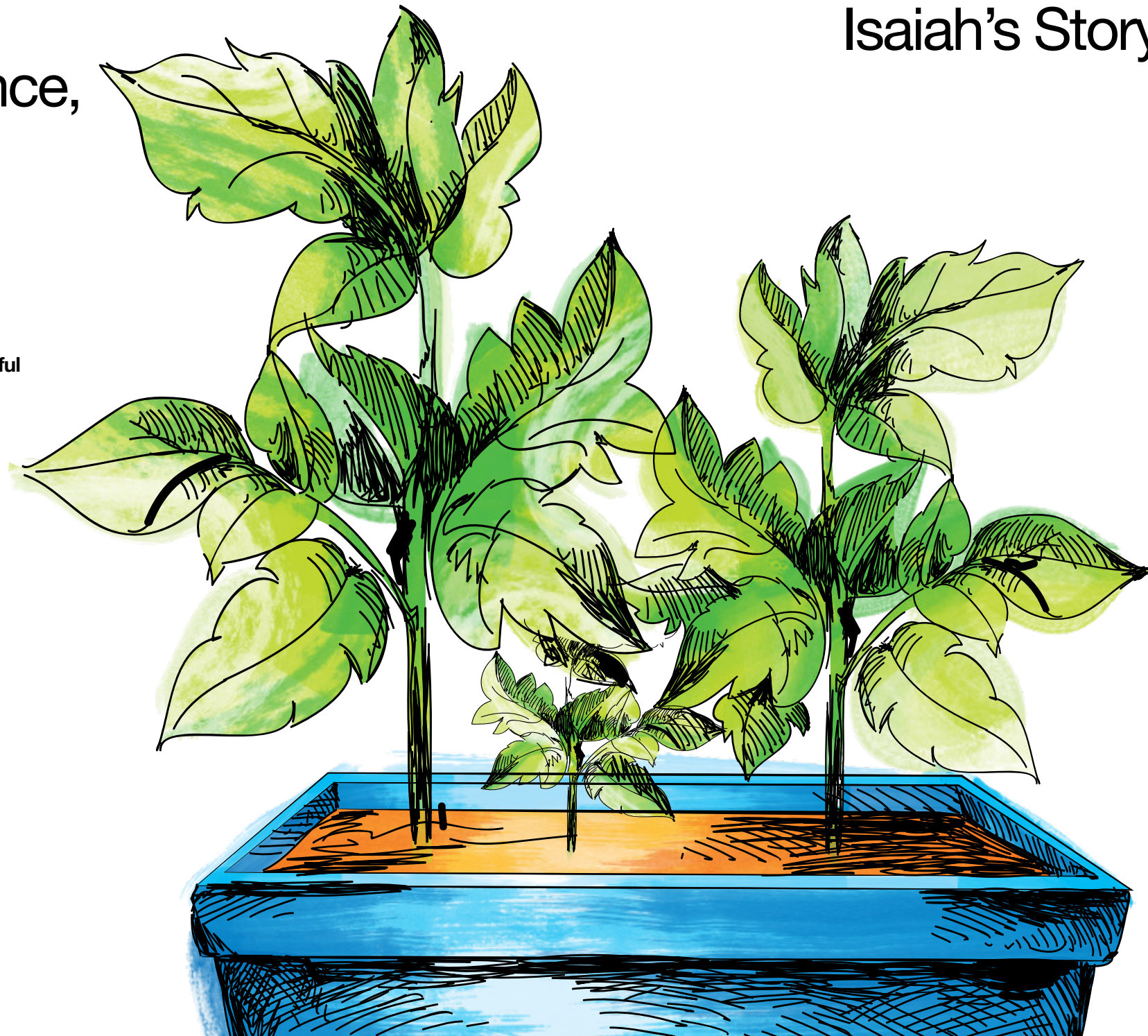
Over time, small shifts became meaningful progress. She engaged more openly in therapy, practiced coping strategies during moments that once felt overwhelming, and strengthened connections with her family. As she moved through residential care into day treatment services, her confidence grew alongside her ability to navigate challenges with greater resilience.

By the time Melissa was discharged in March 2025, the change was clear: not perfection, but progress grounded in self-awareness and hope. As her mother shared, "The staff at Hillside's are incredible people... our care has been life changing for our daughter and our family." Her journey reflects how patient, consistent care can help young people rediscover their sense of possibility.

Support for Young Adults

Nurturing Independence, One Step at a Time

For young adults beginning new chapters far from home, independence grows through steady guidance and meaningful connection. Hillside's Youth Moving On program supports youth as they build practical skills while discovering confidence in their own voice, helping growth unfold in ways that last long after they leave the program.



Isaiah's Story: Finding His Voice

When Isaiah arrived from Guinea, he carried a clear goal: learn English, find work, and build a future in a new country. At first, he was quiet and hesitant, unsure how to express himself in unfamiliar settings. Through the Youth Moving On program, he began taking small but meaningful steps - participating in internships, securing a part-time job at a local restaurant, and working closely with his team to build financial independence and pursue legal stability.

Along the way, Hillside's team members also helped him access long-needed dental care, using private grant funding to cover procedures that were not supported by Medi-Cal. Addressing these essential health needs allowed Isaiah to move forward with greater confidence, reinforcing the sense that he was supported not just in his goals, but in his overall wellbeing.

In therapy, Isaiah explored self-identity and learned to view vulnerability not as weakness but as strength. Over time, subtle changes became visible. He began speaking more in groups, initiating conversations with peers, and sharing humor with Hillside's teams - moments that reflected a growing sense of belonging. Challenges remained, but his willingness to stay engaged showed a resilience that deepened with each experience.

Today, Isaiah continues moving toward independence with confidence, grounded in the relationships and self-trust he has cultivated along the way, continuing to grow into his own voice.





Foster Care and Adoption

Tending Belonging, One Relationship at a Time

For children and youth navigating foster care, healing often begins with consistency - trusted relationships that create space for growth and self-discovery. Through Foster Care and Adoption services, Hillside walks alongside young people as they build new foundations, nurturing independence while helping them feel safe enough to explore who they are becoming.



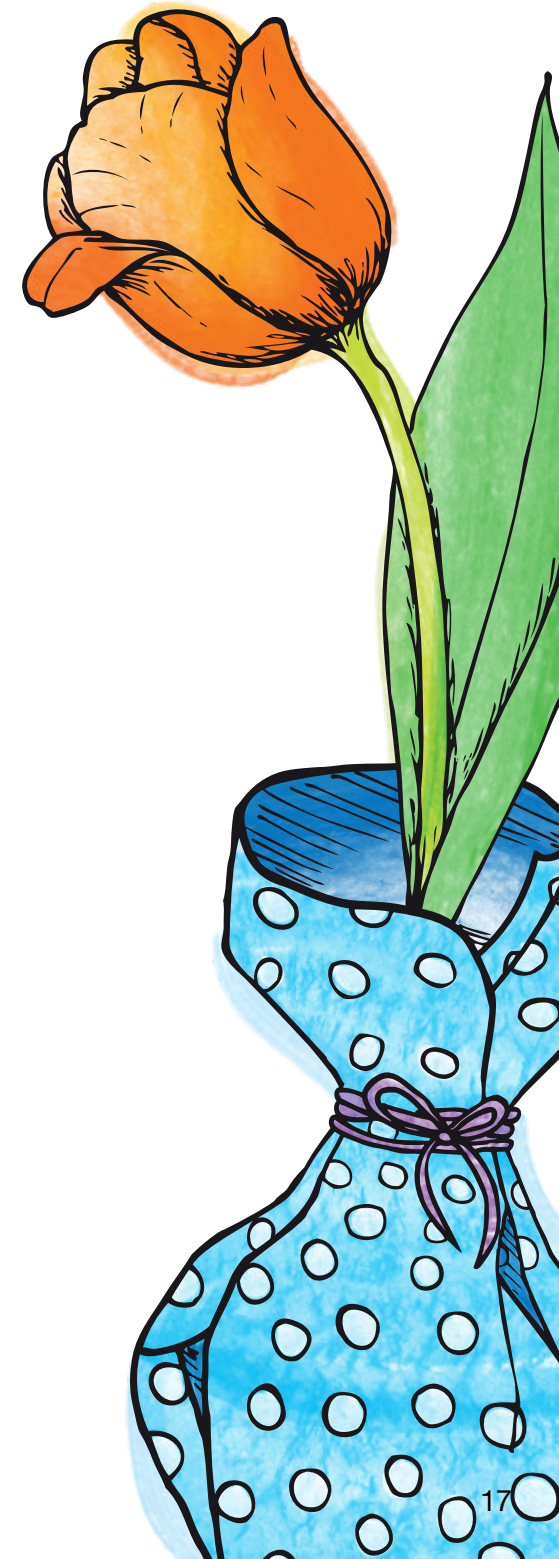
Adriana's Story: Growing Toward Her Future

When Adriana entered the foster care program at 17, she arrived carrying both uncertainty and hope. Quiet and reserved at first, many everyday experiences felt entirely new. Simple acts of self-care - learning how to use a hairdryer, curling iron, or choosing her own shampoo, became moments of discovery. In a space where she finally felt safe to breathe, Adriana began allowing herself to enjoy these experiences, finding empowerment in routines that helped her feel seen and confident. What may seem small to others became meaningful steps toward healing and self-expression.

As her confidence grew, so did her sense of possibility. Having known a life with little family support, Adriana began to imagine a future on her own terms. She committed herself to school, embracing the idea that she could build something for herself.

Inspired by the confidence she found through self-care, she is now pursuing a path in cosmetology, hoping to offer others the same sense of belonging and empowerment she discovered along the way.

Grounded in her faith and deeply connected to her church community, Adriana draws strength from a belief that her journey is guided with purpose. As she prepares for what comes next, she carries forward not only new skills, but a renewed sense of identity - proof that when young people are nurtured with patience, safety, and trust, they are able to bloom.



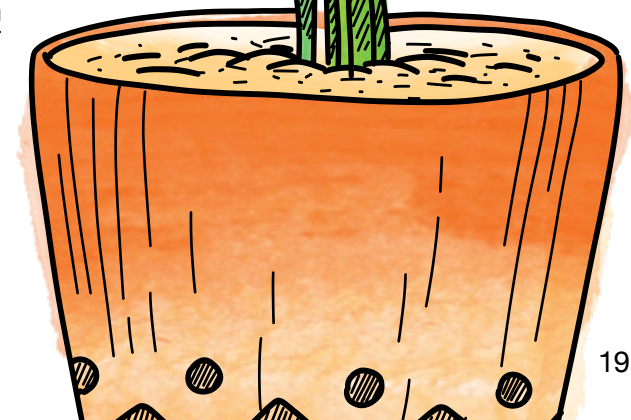
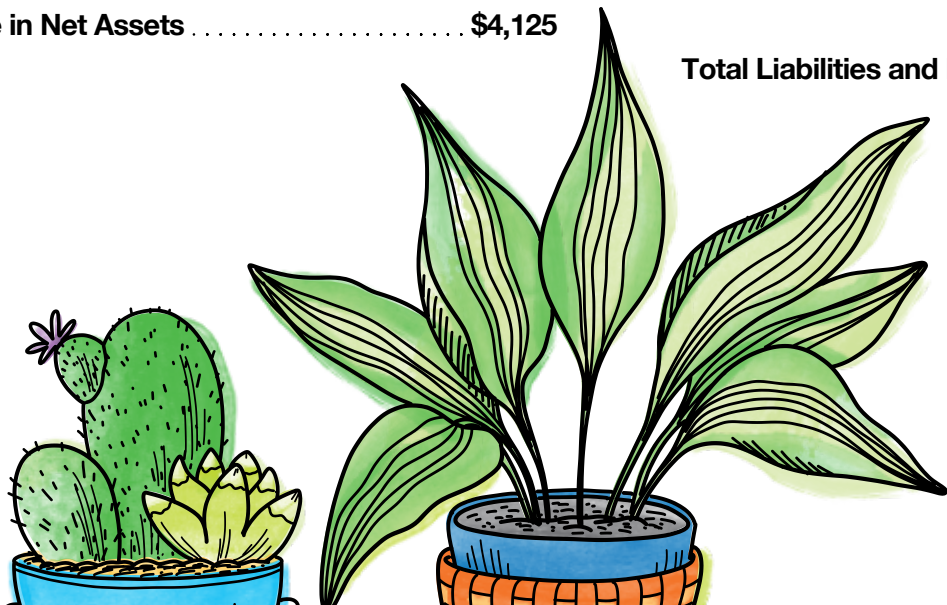
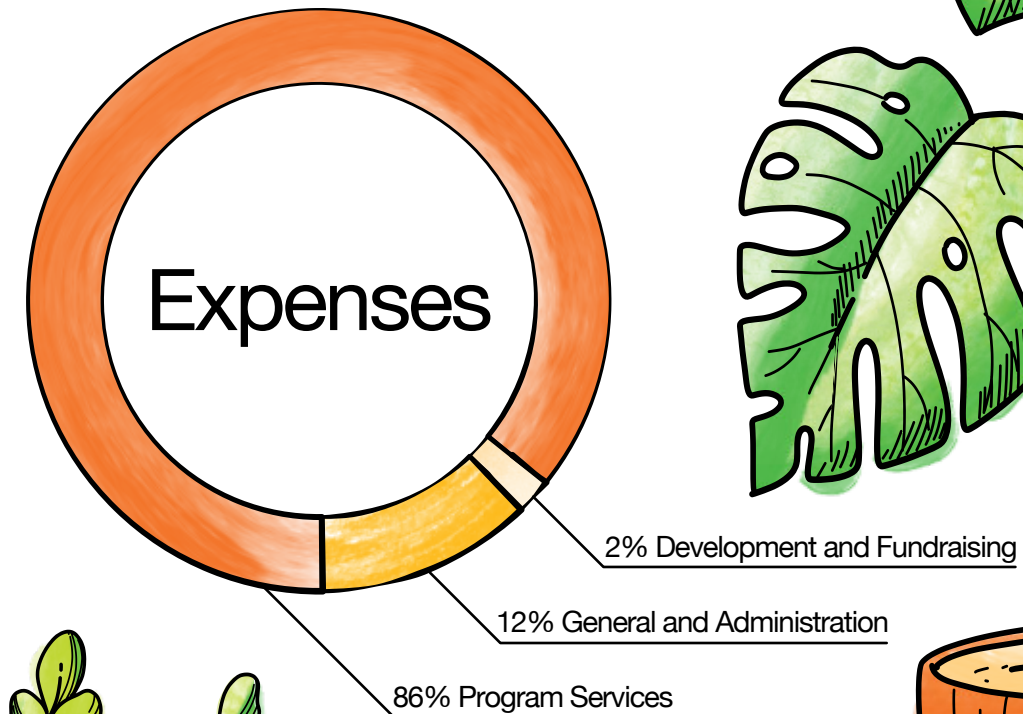
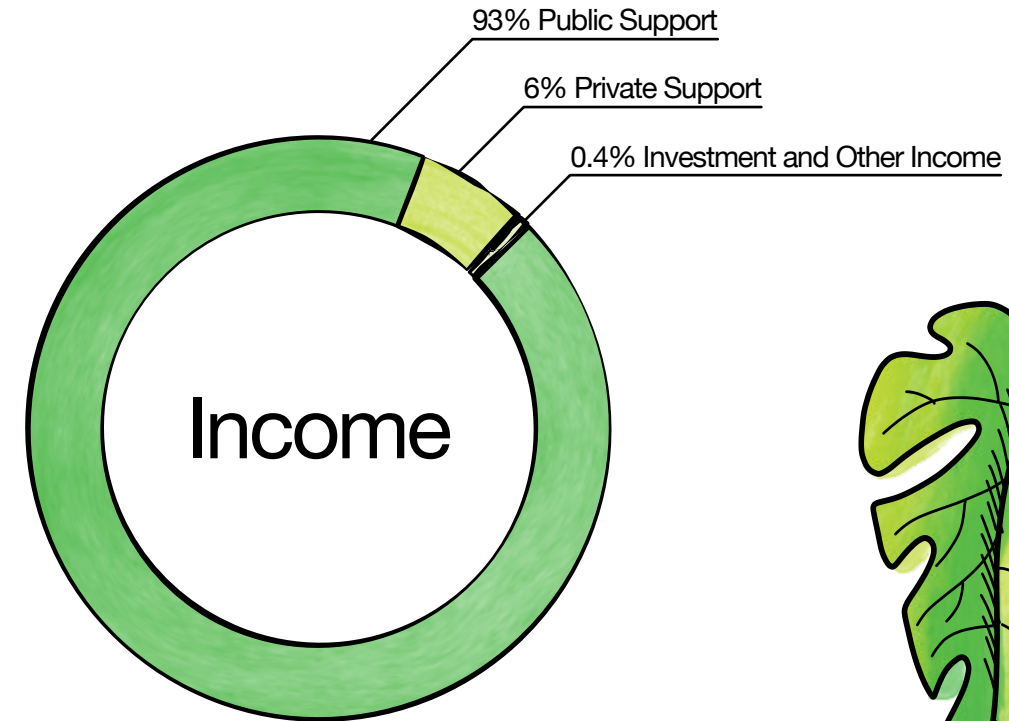
Financial Report

Revenue and Expenses*

Revenue	<i>*in thousands</i>
Government Service Contracts	\$42,762
Program Fees	\$5,173
School Program Fees	\$271
Contributions	\$2,040
Other	\$603
Gain or (Loss) on Investments	\$1,085
In-Kind Contributions	\$243
Total Revenue	\$52,176
Expenses	
Program Services	\$41,446
General and Administrative	\$5,766
Development and Fundraising	\$839
Total Expenses	\$48,051
Change in Net Assets	\$4,125

Balance Sheet*

Assets	<i>*in thousands</i>
Current Assets	\$20,520
Investments	\$2,581
Fixed Assets	\$26,071
Other Non-current	\$1,505
Total Assets	\$50,676
Liabilities	
Current Liabilities	\$4,326
Non-current Liabilities	\$11,255
Total Liabilities	\$15,582
Net Assets	
Without Donor Restrictions	\$33,414
With Donor Purpose Restrictions	\$1,682
Total Net Assets	\$35,096
Total Liabilities and Net Assets	\$50,677



The People Behind the Mission

Every day, Hillside's mission is carried forward by the people who choose to show up for children, youth, and families.

Across programs and departments, Hillside's staff bring compassion, expertise, and an unwavering commitment to people navigating complex challenges. Their work creates spaces where healing can take hold, stability can grow, and young people can begin to imagine new possibilities for their future.

For many team members, Hillside's is more than a workplace; it is a community grounded in purpose and shared values. That sense of connection is reflected in the organization's strong employee retention and the many team members who continue to build long careers in service to the mission.

The Hillside's community extends even further through the generosity of donors who make this work possible. Their support helps sustain programs, expand services, and ensure that children and families receive the care and resources they need.

Over the past year, supporters contributed \$2.2 million in donations and private funding, including \$535,000 raised during the annual gala.

Donors also stepped forward during times of crisis. Following the recent Los Angeles fires, community members rallied to provide support for Hillside's team members who had lost their homes or were displaced - a powerful reminder of the care and solidarity that surrounds the Hillside's community.

The holiday season offered another example of that generosity. Through the annual Adopt-a-Family program, hundreds of supporters fulfilled holiday gift wishes and provided grocery gift cards so families could gather around a special holiday meal.

Beyond the teams who serve and support children and families each day, Hillside's is strengthened by a growing network of volunteers who bring additional energy, creativity, and connection into the community.

Over the past year, Hillside's doubled its number of volunteers, expanding enrichment opportunities that allow youth to explore new interests and build confidence. Volunteers helped introduce activities such as music lessons, soccer, volleyball, and bingo nights with exciting prizes, creating joyful moments that help youth feel connected and supported.

Together, Hillside's team members, donors, and volunteers create the conditions where healing takes hold, stability grows, and young people can imagine new possibilities for their future.

Staff Impact

7% increase in staff retention from FY 20–21 to FY 24–25.

23% annual turnover rate, compared to the 30% national average for community behavioral health agencies.

27% of staff have been with Hillside's for five years or longer, exceeding the national median tenure of 3.9 years.

4% of employees are "boomerang staff" who have returned to the organization after working elsewhere.

Volunteer Impact

Volunteer participation doubled this year, bringing new enrichment activities to youth across Hillside's programs, including music lessons, soccer, volleyball, and community bingo nights.

Donor Impact

\$2.2 million raised through donations and private funding this year, including \$535,000 raised at the Hillside's Annual Gala.



Donor List

Circle of Excellence

Anonymous Friends
Mr. and Mrs. Steve Ahn
Vanessa Alexander
All Saints Church - Pasadena
Jill K. Allen and Burton Lee Harry
Alpha Upsilon
American Business Bank
American Foundation
Mr. and Mrs. John J. Anderson
Ernest F. Antonini
Armanino LLP
Isidro Armenta
Gayla Armstrong
Keith Arnett and Jennifer Shen
Assistance League of Pasadena
Atomic Cartoons
Ayrshire Foundation
Mr. and Mrs. Guilford Babcock
Baby2Baby
Dr. Mikal Barchenger
Los Angeles County Board of Supervisor
Kathryn Barger
James Barnes
Rev. Tommy Baughman
Armida Baylon
Believers' Bible Study Fellowship
Guy Beutelschies
Big Sunday
BMO
Debbe and Spike Booth
The Otis Booth Foundation
BoozeFighters
Born To Be Loved
Julia Bradsher and Jody Ogden
Mr. and Mrs. Gerald Brennan
Teri A. Breschini

Mr. and Mrs. Donald Briggs
Dana & Albert Broccoli
Charitable Foundation
Mr. and Mrs. Chip Brooks
Nancy Brunet
Dr. Anna M. Butturini
C.W. Driver Companies
Claudia Calandrino
Caltech Advancement
& Alumni Relations
Campbell Hall Episcopal School
Valerie Casey and Lawrence E. Uhl
Mr. and Mrs. Thomas Rogers
Susan Chan and Oscar Varela
Church of the Transfiguration - Arcadia
Don and Sally Clark
Commerical Air Systems, Inc.
The Confidence Foundation
Mr. and Mrs. Joseph Corrente
Joseph M. Costa
Mr. and Mrs. Jeffrey Craig
Phyllis D'Ambra
Ariana Dane
Mr. and Mrs. Christopher De Mond
Lesley M. Deck
Marilyn Delanoeye
The Carl & Roberta Deutsch Foundation
Carmen Diaz
Dolores Diaz-Carrey
Damon Didawick and Andrew Stoner
Linda Dupuis
Mr. and Mrs. Stephen Dutka
Matthew and Carleen Eaton
Mr. and Mrs. Curtis Roger Ebeling
Gail Egan
William B. Eichler and Edison Barbosa

Gail G. Ellis Foundation
The English Family Fund
Mr. and Mrs. Andrew A. Esbenshade
Adam Espinoza
Carrie Espinoza
James and Tania Farha
Farmers & Merchants Bank
of Long Beach
Fiduciary Trust International
FireAid LA
Dr. and Mrs. Michael Fishbein
Dee F. Fisher and Mark S. Martinez
Mr. and Mrs. Robert A. Fisher
Mario and Shelly Fiumani - PIN USA, Inc.
Jeannie Flint and David Werbelow
Dr. and Mrs. Henri Ford
Foster Love
Louise Fox
Jim Franke and Steve Bialecke
Franklin Templeton Investments
Dr. Michael Friedman
Friends of Foster Children
Mr. and Mrs. Matt Galletly
Mr. and Mrs. Steve Galletly
Mr. and Mrs. Samuel Garrison
Mr. and Mrs. Stephen E. Gill
Helen Jean Girard
Dr. and Mrs. John W. Given
Ed and Shari Glazer
Max H. Gluck Foundation
Goehner Accountancy
John S. Gong
Google LL
Carol and Michael Gozzip
Greater Horizons
Sara Jane and Alfred Guzman

Edward Gyimah
H100
Mary Dee Hacker
and Steven Nishibayashi
Louis Hamel
Handmade Especially For You
Mia Harboe
Harley-Davidson
Mr. and Mrs. Daniel Harper
Suzanne Hart
Stan Hatch
Sharon Hauptman
Bud and Barbara Hellman Foundation
Charlie Hendon
Stephen Henry
Mr. and Mrs. Eduardo Herrera
Hillsides Guild
Hillsides Volunteer Network
Mr. and Mrs. Richard J. Hirrel
David Hitchcock and Kristin Maschka
Mr. and Mrs. Schuyler Hollingsworth, Jr.
Stacey Hoppe and Michael Williamson
Mr. and Mrs. Mark Hough
Hutto-Patterson Charitable Foundation
JeanEtte Y. Hyatt
I.U.O.E., Local #12 Charity
Golf Committee, Inc.
Imedra Family Foundation
A.C. Israel Foundation, Inc.
Jacob Maarse Florist
J.W. and Ida M. Jameson Foundation
Mr. and Mrs. J. Christopher
Jennings, Esq.
Mr. and Mrs. Davey Johnstone
Maren Jorgensen
Kaiser Foundation, Health Plan, Inc.

Kaiser Permanente Baldwin Park
Medical Center
Mr. and Mrs. Gary Kaseff
Jim and Jean Keatley
Mr. and Mrs. Richard Keller
Mr. and Mrs. Richard Kowaltshuck
Michael Kraut and Dan McCarty
Charles Krozek
The La Canada Thursday Club
Foundation
La Salle High School
Barbara and Ted Lamb
Lark Ellen Lions Charities
Las Candelas
Wendy Lees and Tom Boyle
Richard Levinsohn
Lin Realty Group
Amina and Richard Linn
Lawrence H. Luckham
Clara Maarse
Hank and Ana Maarse
Pamela and John Mahon
Mr. and Mrs. Grady D. Martine
Mark Masters
Patty M. McAllister
Margaret McCarte
Mr. and Mrs. John McCarthy
Mr. and Mrs. Liam McGuinness
Russ and Lottie McKinnon
Mericos Foundation
Mary Anne A. Mielke
Frederick and Angela Miller
Mr. and Mrs. Thomas F. Miller
Joseph Montes
Dr. Nima and Teuta Naghshineh
National Charity League

Mr. and Mrs. James Newton Howard
Walter W. Noce, Jr.
The Kenneth T. and Eileen L. Norris
Foundation
Northrop Grumman Adelante
Dane and Nicole Ohri
Mr. and Mrs. Nigel Olsson
Yoko Ono Lennon
Pasadena Community Foundation
The Patron Saints Foundation
Mr. and Mrs. Gregory Peacock
Gina M. Perez, Psy.D.
Marisol and Frank Perez
Correnda Perkins and Laura Hernandez
Philoptochos Society
Julianne Pinter and Michael James Mani
John and Barbara Poer
Richard H. Poppenberg
QueensCare
RBC Foundation - USA
Edmund J. Regan
Kathleen C. Regan
Regent Seven Seas Cruises
Revolution Office
Mr. and Mrs. Steve Riboli
Robert A. Waller Foundation
Carolina Romero and Gary Sikkens
Rotary Club of Studio City - Sherman Oaks
Stacey Roth, LCSW
Lisa A. Rothstein
Mr. and Mrs. Zhenzheng Rui
Mr. and Mrs. Greg Santilli
Kevin Savage
Barbara and David Scheper
Mr. and Mrs. Richard Semler
Donald and Michelle Servan

Circle of Excellence (continued)

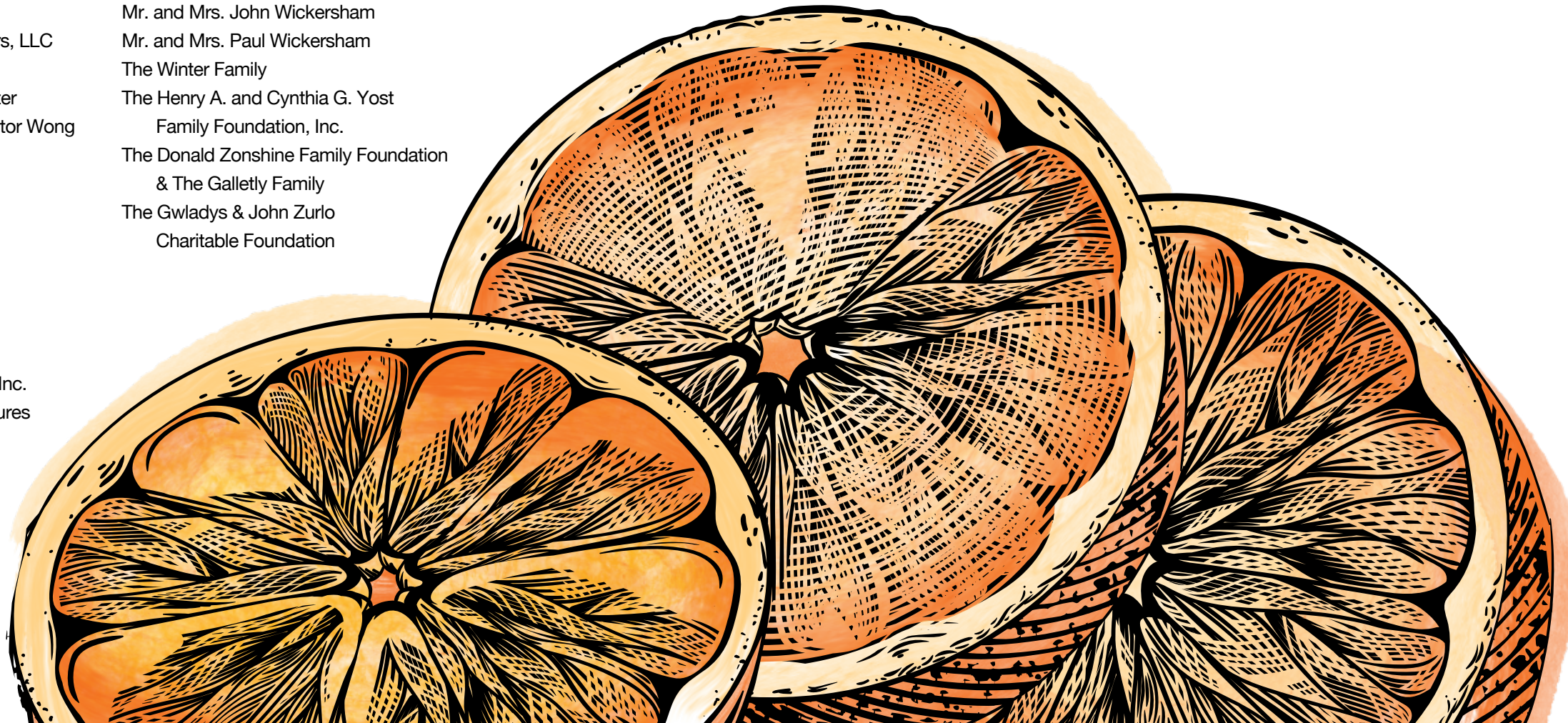
Nisheeta Setlur
Michael and Maribel Shaar
Mr. and Mrs. Parag Shah
Sharp Seating Company
Bill Shields
Judith Shuster
SIG Property Management
The Smith Brothers Restaurants
Lon V. Smith Foundation
Lyn Spector
SPFM/Amwins
Lana G. Spraker
Maureen T. Staley
Mr. and Mrs. Patrick Stern
Strategic Retirement Partners, LLC
Sup Dude, LLC
Mr. and Mrs. Thomas G. Suter
Janis M. Tanji Wong and Victor Wong
Chris Tawil
Linda Tawil
Mary Tawil
Simon Tawil
Andrew Teed
Sherm and Marge Telleen
Cheyenne Thompson
Tokio Marine America
Tokio Marine Management, Inc.
Tony Paredes - Rock Structures
Mr. and Mrs. Gary C. Toops
Maria Estela Perez Torres
and Angel Torres
Suzanne Tutt
Umpqua Bank

USC University Relations
Chelisa Vagim
Mr. and Mrs. Alessandro Valentini
Mr. and Mrs. Vince Villagaran
Mr. and Mrs. Harish V. Vishria
Uyen-Uyen T. Vo
Mr. and Mrs. Greg Wadeyla
Mr. and Mrs. Steve Walker
The Walt Disney Company
The Walt Disney Company Foundation
Warner Bros.
Warner Bros. Discovery
Mr. and Mrs. Aaron Weiss
Mr. and Mrs. John Wickersham
Mr. and Mrs. Paul Wickersham
The Winter Family
The Henry A. and Cynthia G. Yost
Family Foundation, Inc.
The Donald Zonshine Family Foundation
& The Galletly Family
The Gwladys & John Zurlo
Charitable Foundation



Legacy Society | Living

Anonymous Friends
Mr. and Mrs. Peter Arkley
Mr. and Mrs. Frank W. Beers
Rhonda G. Bennett
Debbe and Spike Booth
Valerie Casey
Chris and Toni Christensen
Don and Sally Clark
William and Shana Culkins
Maxine Frankel
Anita Fromholz
Jay and Linda Griffey
Mary Dee Hacker
and Steven Nishibayashi
Bruce and Susan Heard
Tracy and Dick Hirrel
Frank Jameson, Jr.
Chris and Alicia Lancashire
Richard and Amina Linn
Robert L. Lippert
Ralph Malmquist
Vincent G. Mazzucchelli
Patty M. McAllister
Cathy and Barry Sedlik
Mr. and Mrs. Alfred T. Smith
Lyn Spector
Sherm and Marge Telleen
Mr. and Mrs. Richard J. Ulinski
Alyce Wade Urbach
Marjorie Zahner



Legacy Society | Deceased

Anonymous Friends
W. Reid Allen, Jr.

The J. Robert & Marilyn F. Anderson Trust

Effie B. Baile

Iverne B. Bailey

Florence Gates Baldwin

Dorothy M. Ballo

Ellasue Barber

Jayne Barbera

Elsie Behrends

Dorothy M. Booth Charitable Trust

Helen B. Boyle

Jeanne Cox Brady

Betty E. Brainerd

Dorothy F. Briggs

Edna T. Broening

Hyman and Yolanda Brokowsky Family Trust

J & H Brophy Marital Trust

Chester and Barbara Buker

G. C. Burleigh

The Butterfield Trust

Caroline J. Cameron

Margaret Campbell

Marian P. Case

Edith E. Clancy

Vera Cleaver

Francis H. Clougherty

Ernest Worth Coan

The Coates Trust

Flora A. Collins

Westwood Collins

Alyce H. Compton

Ralph Congreve

Virginia Conlin

Emily A. Cosby

Virginia H. Crockett

Walter M. Crockett, Jr.

Dorothy Olive Curtis

Willie T. Danley

Amelia M. De Groff

Frances B. De Vincent

Diane Deininger

Lucille J. Denton

Pauline Keller Dickey

Eunice B. Donahue-Graham

Percy Dudman

Maguerite V. Duff

Phoebe J. Easton

Ethel P. Ebbinghaus

Louise Elliot

Don G. Erickson

Susan R. Evans

Emily Bennett Flintham

Alby R. Foy

Estelle Chase Freese

Margaret Gammeter

John Giessenhoff

Elaine R. Gilberson

Hugh and Joyce Gillies

Phyllis A. Glendenning

Harriet Snider Greeff

Elizabeth Greenberg

Dorothy Grist

Nancy Hammond

Louise Handy

Alda L. Harrison

Brenda L. Hastings

Mary J. Hawkins

Mary Hellis

C. A. Henkens

L. Boyd Higgins

Geraldine Hitchcock

John and Ida Hitchcock

Linna Hogan

Thomas S. Huddleson

Gomer Jones

Zelma Karnanski

Judy Kerler

William Kniering

Edmond R. Kramer

Ruth S. Kraus

Viola Larsen Marital Trust

Marion Law

Hilda Lemke

Ruth G. Lilly

Lawrence H. Linstrom

Hazel Lowell

Mary Louise Luderer

Mary Helen Lynch

Jocelyn P. McAfee

Isaac McClelland

Jeannie A. McCormick

Nolah Paine McGowan

Gregory McGuire

Grace B. McLachin

Eugene L. Milew

Josephine T. Millson

Elma B. Mock

T. Piney Moran

The Charles W. & Margaret F. Morrice Trust

Jesse D. Moses

The Mullins Family Trust

Pauline Myrick

Eric Nelson

W. G. Ogburn

Isabell Ostrom

Allan G. Peirsol

Afton Penn

Ruth Kellogg Peterson

The L. Pettit Trust

Evelyn W. Pickering

Lucile Arthur Pickering

Dorothy S. Pierose

Bernard and Judy Reiling

Helen H. Reilly

Marcella Richards

Dorothy Roberts

Ralph S. Roberts

Suzanne M. Rooney

Edward L. Royal

John M. Sadler

Grace G. Sandstrom

Howard B. Schow

Thelma Mary Schroeder

Stephen and Elzada Schweitzer

Jacqueline Smith

Dwight W. Stephenson

Sidney Stern

Robert Cresse Stranger

Rhett Peters Taylor

Alfred R. Thomas

Harold L. Thomas

Frances E. Tomlinson

Herbert S. Towne

Carol L. Valentine

Mary Louise Van Metre

Margaret Vance

Arthur B. Venberg

Herbert B. Volk

James Richard Volpe

Nancy Katharine Weier

Mildred W. Weissend

M.T. Westerbeck

M. A. Wiles

Barbara Steele Williams

Barbara Winter

Albert H. Wolf

Olga K. Wolf

William Woodhams

Gwladys V. Zurlo



All Donors and Supporters

Anonymous Friends	Assistance League of Flintridge	Mr. and Mrs. Paul Bergman	Mr. and Mrs. Robert A. Bridges	Mr. and Mrs. Paul H. Chamberlain	Create Now
A Noise Within	Assistance League of Pasadena	Lawrence Bernstein	Mr. and Mrs. Donald Briggs	Kimberley Chan	Karen Crisi
Angela Abarta	AT&T Pioneers	Mr. and Mrs. Doug Bernudez	Muffett Brinkman	Susan Chan and Oscar Varela	Mr. and Mrs. Michael Cronin
Academy of Magical Arts, Inc.	Janie Atlas	Dale Best	Dana & Albert Broccoli	Chandler School	Phyllis D'Ambr
Accessory Innovations	Atomic Cartoons	Better Today, Better Tomorrow	Charitable Foundation	Mr. and Mrs. Peter Chang	Ariana Dane
Anthony Adame	William G. Atsumi	Guy Beutelschies	Mr. and Mrs. Chip Brooks	Sandy Chautran and William Luong	DAOU Vineyards and Winery
Mr. and Mrs. Peter D. Adams	Austin Hope	Bhavna Bhakta	Ron Brown	Congresswoman Judy Chu	Charles Davis
Meghna Agarwal	Autry Museum of the American West	Mr. and Mrs. Michael Biard	Caren C. Brownlie	Kathy Chun Lee	Davis Wright Treamaine LLP
Pernell Agdeppa	Laura Ayala-Huntley	Big Sunday	Meryl Brownstein	Church of the Transfiguration - Arcadia	Mr. and Mrs. John Day
Bilal Ahmed	Ayres Hotels	Gregg Bissonette	Jacqueline T. Broxton	Churrascaria Plataforma	Rhiannon De Carlo
Mr. and Mrs. Steve Ahn	Ayrshire Foundation	Matt Bissonette	Nancy Brunet	Clairbourn School	Laurie De Freitas
Mr. and Mrs. John Aitchison	Mr. and Mrs. Guilford Babcock	Dr. Neda Black	Jill Bucholtz	Don and Sally Clark	Anna M. De Groote
Matthew Aldrich	Baby2Baby	Justin Blackburn	Dennis Buckley	Claro's Italian Market	Mr. and Mrs. Christopher De Mond
Barbara Aleck	Tatiana Baghdadlian	Patricia G. Blair	Anne Buettner	Lisa Clements	Lesley M. Deck
Mary Jane Alexander	Madeline Bailey	Mr. and Mrs. Kevin G. Blake	Margarite Buitrago	Mr. and Mrs. David Coher	Alyson Dee Moore
Vanessa Alexander	Mr. and Mrs. Robert C. Baker	Janelle Blanco	Kim Bullard	Mr. and Mrs. Todmund E. Cole	Marilyn Delanoeye
All Saints Church - Pasadena	Danna Balas	Mr. and Mrs. John A. Blich	George V. Bullock	Carlos F. Collard	Ani Derhartounian
Jill K. Allen and Burton Lee Harry	David & Elita Balfour Foundation	Bloomfield Creamery	Mr. and Mrs. Leonard C. Bunyan	Collins & Collins LLP	Lauralyn Deringer
Allen Lund Company	Bandolier	BMO	Burke Williams	Commerical Air Systems, Inc.	The Carl & Roberta Deutsch Foundation
Alpha Upsilon	The Bar Method	Bokaos, Inc.	Mr. and Dr. Alasdair Burton	Committee of Professional Women	Mr. and Mrs. Umberto J. Di Fiore
Mr. and Mrs. Fortino Amaya	Josephine A. Barbera	Rodney Bolton	Peggy Butler	of Los Angeles Philharmonic	Diakanos Club
Michael Ambers	Dr. Mikal Barchenger	Christine Bon Sleiman	Dr. Anna M. Butturini	The Confidence Foundation	Carmen Diaz
American Business Bank	Los Angeles County Board Supervisor	Debbe and Spike Booth	C.W. Driver Companies	ContinuumCloud	Dolores Diaz-Carrey
American Foundation	Kathryn Barger	The Otis Booth Foundation	Jennifer Caballero	Mr. and Mrs. John L. Cooper	Damon Didawick and Andrew Stoner
Michelle Amoah	James Barnes	BoozeFighters	Cabrillo Marine Aquarium	Ray Cooper	Mr. and Mrs. Bob Dion
Mr. and Mrs. John J. Anderson	Jeanette Barrera	Born To Be Loved	Claudia Calandrino	Mr. and Mrs. James John Coppack	Dianne Dixon
Anthony's Framing Gallery	Mr. and Mrs. Olin Barrett	Mr. and Mrs. Bruce Bornhurst	California Yatch Club	Janelle Cordova	Brian, Nancy, and Genevieve Doben
Ernest F. Antonini	Rev. Tommy Baughman	Christy L. Bradley	Caltech Advancement & Alumni Relations	Mr. and Mrs. Joseph Corrente	Dr. Raul Dominguez, Jr.
Aquarium of the Pacific	Mr. and Mrs. Scott Baum	Julia Bradsher and Jody Ogden	Campbell Hall Episcopal School	Josette Corro	Mr. and Mrs. Kenneth Drew
Janette V. Arenz	Armida Baylon	Ryan Brechmacher	Marlene Canter	Joseph M. Costa	Karen Dreyer
Armanino LLP	Carolyn Baylon	Mr. and Mrs. Peter J. Breckheimer II	Carpet Castle, Inc.	Mr. and Mrs. John Coughlin	Katie Driscoll
Isidro Armenta	Mr. and Mrs. Thomas Bea	Mr. and Mrs. Brad Bredice	Valerie Casey and Lawrence E. Uhl	Tina Cox	Barbara J. Eliades and Scott H. Dunham
James T. Armitage	Adrienne Beaumaster	Mr. and Mrs. Gerald Brennan	Mr. and Mrs. Thomas Rogers	Mr. and Mrs. Jason Cozby	Duo Studio
Armory Center for the Arts	Mr. and Mrs. Kevin Beggs	Anita Brenner	Mr. and Mrs. James Castillo, Jr.	Gerald Craft	Linda Dupuis
Gayla Armstrong	Believers' Bible Study Fellowship	Teri A. Breschini	Kelly and Sean Cauvel	Hilary Crahan	Mr. and Mrs. Stephen Dutka
Keith Arnett and Jennifer Shen	Mr. and Mrs. Claud Beltran	Jennifer Brian and Chet Fenster	Celestino Ristorante and Bar	Mr. and Mrs. Jeffrey Craig	Matthew and Carleen Eaton

All Donors and Supporters (continued)

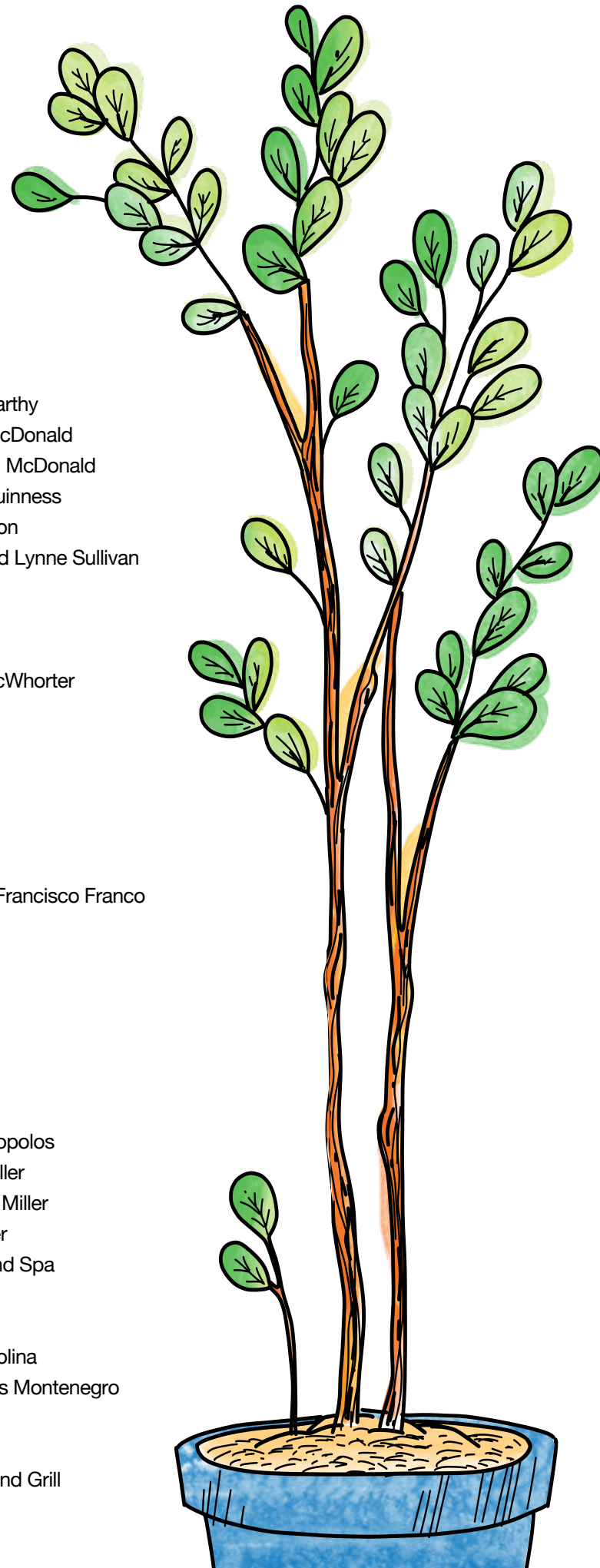
Mr. and Mrs. Curtis Roger Ebeling	Mr. and Mrs. David L. Flores	Christina Gilmour	Mary Dee Hacker	Mr. and Mrs. Greg Holve	Karen Jenson
Eden Garden Bar & Grill	Beatrice Floyd	Helen Jean Girard	and Steven Nishibayashi	Diane Hong	Janet Johnson
Gail Egan	Dr. and Mrs. Henri Ford	Dr. and Mrs. John W. Given	Todd Halabrin	Stacey Hoppe and Michael Williamson	Paula L. Johnson
William B. Eichler and Edison Barbosa	Forever Kids	Ed and Shari Glazer	Lillian Halden	Mr. and Mrs. Mark Hough	Mr. and Mrs. Davey Johnstone
Forrest Eldred	Mr. and Mrs. Tom J. Foster	Global Creative Coalition	Bonnie Hall	Mr. and Mrs. Richard R. Howe	Aisha Jones
Gail G. Ellis Foundation	Foster Love	Glow Beauty Co.	Erin Hall	Richard R. Howe Foundation	Mr. and Mrs. Doug Jorgensen
Helen S. Elson	Louise Fox	Max H. Gluck Foundation	Louis Hamel	Jonathan Huang	Maren Jorgensen
The English Family Fund	Foxy's Kitchen and Bar	Goehner Accountancy	Handmade Especially For You	Jeri Hughes	JPL
The Episcopal Church of the Ascension	Edward C. Frank	David C. Gogerty	Tamera Hanna	Rev. and Mrs. Norman Hull	Julienne's Fine Foods
Episcopal Church of the Advent	Jim Franke and Steve Bialecke	Darren Gold	Jeanne Hansen	Susan Hull	Robert Kahn
Dr. Annette Ermshar and Mr. Dan Monahan	Franklin Templeton Investments	Gondola Getaway	Mia Harboe	Huntington Library, Art Collections, and Botanical Gardens	Grace Kahwajian
Mr. and Mrs. Andrew A. Esbenshade	Jake Freed	John S. Gong	Harley-Davidson	Huntington Medical Research Institute	Kaiser Foundation, Health Plan, Inc.
Adam Espinoza	French Kande	Ronald Gong	Mr. and Mrs. Daniel Harper	Hutto-Patterson Charitable Foundation	Kaiser Permanente Baldwin Park Medical Center
Carrie Espinoza	Dr. Michael Friedman	Shari Gong	Suzanne Hart	Belinda Huy	Mr. and Mrs. Gary Kaseff
Elena Espinoza	Friends of Foster Children	Jessica Gonzalez	Stan Hatch	HW LLP	Irvin Kaw
Estate Jewelers	Theresa Fuentes	Google LL	Sharon Hauptman	JeanEtte Y. Hyatt	Jim and Jane Keatley
Robert Eversman	Mr. and Mrs. Lyle Fulks	Ezmaralda Gordon	Mr. and Mrs. Mike Hazen	I.U.O.E., Local #12 Charity Golf Committee, Inc.	Mr. and Mrs. Richard Keller
James and Tania Farha	Meghna Gaeta	Michelle Gottlieb	Health Net, LLC	Rose Iclisoy	Judith Kenehan
Farmers & Merchants Bank of Long Beach	Noah Gaeta	David Gottschall	Bud and Barbara Hellman Foundation	Manuela Iervolino	Stuart Kennedy
Abby Feilich	Gale's Restaurant	Carol and Michael Gozzip	Charlie Hendon	Imedra Family Foundation	Kevin Kevin
Brenda Feldman	Catherine Gallagher	Jeremy Gozzip	Mr. and Mrs. Robert A. Henkens II	In-N-Out Burger	Kidspace Children's Museum
Kristin Feltz	Mr. and Mrs. Matt Galletly	Grace Episcopal Church - Glendora	Stephen Henry	Invicta Recovery Center	Jennifer Killam
Claudia Ferguson	Mr. and Mrs. Steve Galletly	Greg Grande	Andrew Hernandez	A.C. Israel Foundation, Inc.	King's Seafood Company
Mr. and Mrs. Orlando Ferrante	Jalajadevi Ganapathy	Greater Horizons	Mr. and Mrs. Eduardo Herrera	Italian Amercian Museum of Los Angeles	Mr. and Mrs. Ira Klein
Ferrazzani's Pasta & Market	Lucia Garcia	Mr. and Mrs. Joseph Greco	Mr. and Mrs. Steve Herzberg	Mr. and Mrs. Neil Jack	Lisa Klein
Fiduciary Trust International	Brian Garrett	Bonnie L. Green	Mercedesz Heuer	Jacob Maarse Florist	Joan Kobori
FireAid LA	Mr. and Mrs. Samuel Garrison	Green Street Restaurant	Mr. and Mrs. John J. Higgins	Wendy Jacobson	Mary Kochones
First Wilshire Securities Managment, Inc.	Karen Garza	Kathryn Greene	High Point Academy	J.W. and Ida M. Jameson Foundation	Gayane Kostanyan
Dr. and Mrs. Michael Fishbein	Mr. and Mrs. Jeff Gavitt	Danielle R. Grimes	The Higueros Family	Jeff Janofsky	Mr. and Mrs. Richard Kowaltshuck
Dee F. Fisher and Mark S. Martinez	Kahwajian Gayaneh	Guitar Center Music Foundation	Ernest Hilger	Doreen Jansen and Michael Fitzpatrick	Dave Koz
Mr. and Mrs. Robert A. Fisher	Jeannette F. Gerk	Jennifer Gurrola	Hillsides Guild	Michael P. Jelf	Michael Kraut and Dan McCarty
Mario and Shelly Fiumani - PIN USA, Inc.	Mr. and Mrs. Brian A. Geurts	Sara Jane and Alfred Guzman	Hillsides Volunteer Network	Mr. and Mrs. J. Christopher Jennings, Esq.	Mr. and Mrs. David Krohn
Mr. and Mrs. Brad Fleiss	Felicita Giannavola	Edward Gyimah	Mr. and Mrs. Richard J. Hirrel	Mr. and Mrs. Zach Jennings	Charles Krozek
Mr. and Mrs. Louis Fleming, Jr.	Mr. and Mrs. Steven Giannotta	Missy Gymns	David Hitchcock and Kristin Maschka		La Canada Presbyterian Church
Jeannie Flint and David Werbelow	Kathaline Gibbons	H100	Joe an Dolores Holguin		The La Canada Thursday Club Foundation
Flintridge Bookstore & Coffeehouse	Mr. and Mrs. Stephen E. Gill	Barbara M. Hacker	Mr. and Mrs. Schuyler Hollingsworth, Jr.		

All Donors and Supporters (continued)

La Salle High School
 Donald LaFollete
 Ham Lee, Dylan and Keira Lam
 Barbara and Ted Lamb
 The Lamb Family Charitable Fund
 Maryjo Lang
 The Langham Huntington, Pasadena
 Mr. and Mrs. Brett R. Langrell
 Delilah Lanoix
 Lark Ellen Lions Charities
 Las Candelas
 Mike Laybourn
 The Leaders Institute
 Paul LeDoux
 Carolyn N. Lee
 Wendy Lees and Tom Boyle
 Lisa Leiter Wissink
 Yoko Ono Lennon
 Richard Levinsohn
 David Levinson
 Rahniesha Lewis
 LightGabler LLP
 Lin Realty Group
 Sylvia Linares
 Timbrey Lind
 Sheridan Link
 Amina and Richard Linn
 Heidi Linnebach
 Liquid Farm Winery
 Mr. and Mrs. Buzz Little
 Naomi Locatelli
 Iris Lopez
 Los Angeles Chamber Orchestra
 Los Angeles Conservancy
 Los Angeles County Museum of Art
 Los Gringos Locos

Gail Lovejoy
 Gina Loyonnet
 Howard Lu
 Lawrence H. Luckham
 Liem Luong
 Gwendolyn Lynn
 William J. Lyons
 Clara Maarse
 Hank and Ana Maarse
 Jennifer Mabley
 Suzanne Mace
 Cindy Macias
 Tomas Macias
 Macy's West, Inc.
 Judy Magee
 Pamela and John Mahon
 Main Gate, LLC
 and Warner Bros. Television
 Mr. and Mrs. Earl Maize
 Mr. and Mrs. Donald O. Manning
 Claire Marco
 Marina Restaurant
 Judy Kenyon Martin and Dick Martin
 Mr. and Mrs. Grady D. Martine
 Mr. and Mrs. Juan Martinez
 Mr. and Mrs. William P. Martone
 Mason & Associates, Inc.
 Brent and Leah Mason
 Charles W. Mason
 Mark Masters
 Chrystal Mataalii
 Benedict P. Mazotas
 Patty M. McAllister
 Kathleen McBride
 Margaret McCarte
 Mr. and Mrs. Edward McCarthy

Mr. and Mrs. John McCarthy
 Mr. and Mrs. Stephen McDonald
 Mr. and Mrs. Stephen A. McDonald
 Mr. and Mrs. Liam McGuinness
 Russ and Lottie McKinnon
 Dennis J. McNamara and Lynne Sullivan
 Marc McNeil
 McPrice Myers Wines
 Karen McTiev
 Mr. and Mrs. Richard McWhorter
 Jessica Mead
 Andy Medina
 Joseph Medina
 Casey Meinster
 Elizabeth Mejia
 Catherine Mendez
 Claudia Menendez and Francisco Franco
 Mericos Foundation
 Naomi Merken
 Candice Merrill
 David Metzinger
 Lisa Metzinger
 Lynn Metzinger
 Mary Anne A. Mielke
 Mr. and Mrs. Nick Mihalopolos
 Frederick and Angela Miller
 Mr. and Mrs. Thomas F. Miller
 Mr. and Mrs. Mark Milner
 Miracle Spring Resort and Spa
 Mission Tile West
 Moda Optique
 Mr. and Mrs. Jose M. Molina
 Mr. and Mrs. Juan Carlos Montenegro
 Joseph Montes
 Michele Montllor
 Moonstone Beach Bar and Grill



Amaya Mootry
 Victoria S. Mordecai
 Lori Morgan
 Mr. and Mrs. Shon Morgan
 Michael Morris
 Rebecca Mota
 Mrs. Fish
 Tracy Mudie
 Monica Munoz
 Robert Murr
 My Own Gear
 Dr. and Mrs. Lawrence W. Myers
 Andrew Myers
 Natalie Naftzger
 Dr. Nima and Teuta Naghshineh
 Felicia Nalivansky
 Edward Nathan
 National Charity League
 National Charity League - Pasadena
 National Charity League -
 Diablo Valley Chapter
 NBC Universal
 Lynn M. Neill
 Drs. Marvin and Mary Nelson
 New Moon Restaurant
 J.M. Newcomb
 Newmark
 Mr. and Mrs. James Newton Howard
 Charlene Nguyen
 Mr. and Mrs. Robert Nicholas
 Nick's Restaurant
 Mr. and Mrs. Alastair Nicol
 Sandra Nieto
 Walter W. Noce, Jr.
 Merri Noel
 Rachel Noguera

NOHO Senior Arts Colony
 Michael Noll and Wendy Davis
 The Kenneth T. and
 Eileen L. Norris Foundation
 Northrop Grumman Adelante
 Mr. and Mrs. George Null
 Dane and Nicole Ohri
 Patricia A. Olivieri
 Mr. and Mrs. Nigel Olsson
 Onil Chibas
 Opera Italia
 Tricia Ortiz
 Mr. and Mrs. Thomas O'Toole
 Mr. and Mrs. Norman Owens
 Roxanne Pacheco
 Paramount Pictures
 Stephanie Parke
 Pasadena Community Foundation
 Pasadena Ice Skating Center
 Pasadena Tournament of Roses Association
 Pasadena Vice Mayor's Office
 The Patron Saints Foundation
 Mr. and Mrs. Edward Patterson
 Mr. and Mrs. Russell A. Patterson
 Robert Paud
 Mr. and Mrs. Gregory Peacock
 Rabbi Michelle Pearlman
 Sarah Peck
 Erin Peitso
 Perch LA
 Gina M. Perez, Psy.D.
 Marisol and Frank Perez
 Senator Sasha Renee Perez
 Correnda Perkins and Laura Hernandez
 Julie Perkins
 Jean W. Perry

All Donors and Supporters (continued)

Philoptochos Society

Pie 'N Burger

Patricia V. Pinney

Dr. and Mrs. Drew Pinsky

Julianne Pinter and Michael James Mani

Steven Piorkowski

Trena Pitchford

Mr. and Mrs. George C. Platisa

Alexandra Poer

John and Barbara Poer

Carol A. Pontrelli

Richard H. Poppenberg

Emily Porter

Portobanco's Restaurant

Kim Posin and Brooklyn Posin

QueensCare

Jennifer Quinn

Mr. and Mrs. John H. Quinn

Dr. and Mrs. Philip W. Ralls

Whitney Ralls

Mark Ralph

Armando Ramos

Ramos Consulting Group

Patricia Rauth

Raza Motorcycle Riders

RBC Foundation - USA

Edmund J. Regan

Kathleen C. Regan

Regent Seven Seas Cruises

Shamin Remtulla

Maria Elena Renteria

Republik Coffee

Revolution Office

Mr. and Mrs. Steve Riboli

Ripley's Believe It or Not

Lisa Robertiello

Roclord Studio Photography

Mr. and Mrs. Oscar Rodriguez

Shelly Rogers, M.D.

Thomas Rogers

Victoria B. Rogers

Carolina Romero and Gary Sikkens

Tena Rosser and Raz Schionning

Rotary Club of Studio City - Sherman Oaks

Stacey Roth, LCSW

Jonathan Rothberg

Rothschild & Co

Lisa A. Rothstein

Jean Rowe

Rebecca Rowland

Mr. and Mrs. Zhenzheng Rui

Ruth's Chris Steak House

Mr. and Mrs. George Saavedra

Mr. and Mrs. George Sakellariou

Marialena Sala

Constance Salz

San Antonio Winery

San Francisco Opera

Mr. and Mrs. Peter Sandford

Santa Anita Park

Mr. and Mrs. Greg Santilli

Mr. and Mrs. Andrew Sarkissian

Kevin Savage

Kosuke Sawada

Marrick E. Sayers, Ph.D.

Elizabeth Schairer

Barbara and David Scheper

Valerie Schmidt

Pamela Schoot

Jessica A. Schulman

Cathy Schwartz

Mr. and Mrs. Louis Sclafani

Mr. and Mrs. Barry S. Sedlik

Anthony Segil and Elena Galabova

Mr. and Mrs. Richard Semler

Donald and Michelle Servan

Nisheeta Setlur

Michael and Maribel Shaar

Mr. and Mrs. David Shafer

Kenneth John Shaffer

Dicky Shah and Nehal Lakhani

Mr. and Mrs. Parag Shah

Sharp Seating Company

Ann Shen

Colette Shepard

Susan Sherman

Sherrill Leavitt for Friends

of Easter Children

Bill Shields

L Stanton Shipley

Kourosh Shirazi

Mr. and Mrs. Paul N. Shishima

Ashley Showell

Judith Shuster

Lauren Siegel

Sierra Madre Playhouse

SIG Property Management

Caryl Simpson

Nathalie Simpson

Mr. and Mrs. Scott Slater

Mr. and Mrs. Dennis D. Slattery

The Smith Brothers Restaurants

Lon V. Smith Foundation

Gail Smith

Mr. and Mrs. Roger E. Smith

Smoke House Restaurant, Inc.

Tatyana Smolen

Robert Smurlo

Mr. and Mrs. Kevin Snaer

The Rev. Canon Edward Sniecinski

Mr. and Mrs. David S. Sniezko

Katherine Solaini

Alina Sookasian

Roubina Sookasian

Ingrid Sorto

South Hills Academy

Southland Credit Union

Susanne Spangler and Eric Bell

Lyn Spector

Collin Spencer

SPFM/Amwins

Mr. and Mrs. Gary Spiecker

Lana G. Spraker

St. Edmund's Church

St. Edmund's Episcopal Church - San Marino

St. Edmund's Nursery School

St. Francis of Assisi Church

St. Mark's-In-The-Valley Church - Los Olivos

St. Mary's Church - Los Angeles

Maureen T. Staley

Stantec

Natalie Star

Kimberly Stern

Mr. and Mrs. Patrick Stern

Brian Stewart

Mr. and Dr. Ian Stewart

Mr. and Mrs. Gene Stone

Susan Stone

Mr. and Mrs. Nick Stonnington

Warren C. Stout, M.D.

Strategic Retirement Partners, LLC

Levis Strauss Foundation

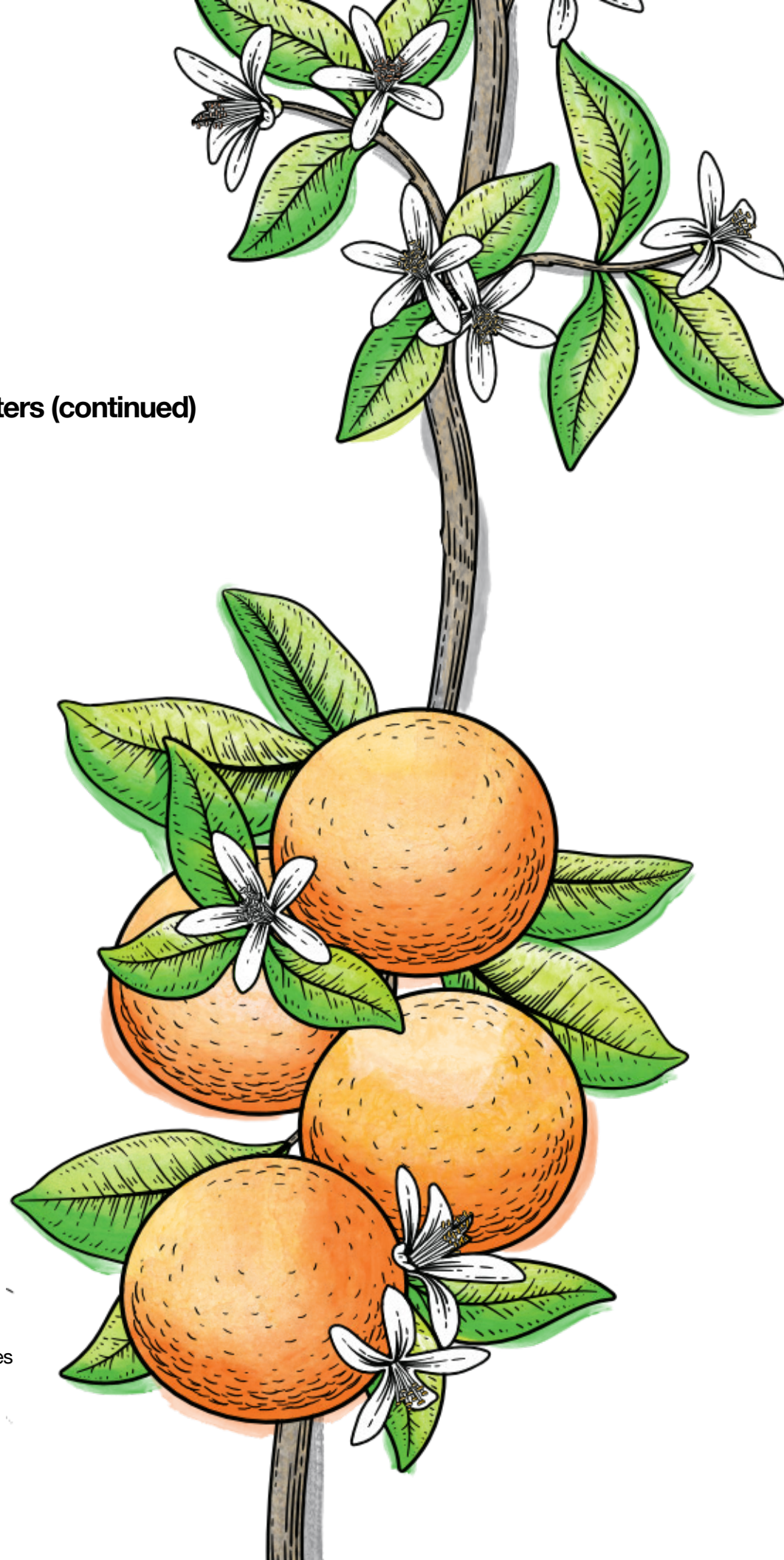
Cheri Strelow and Peter Soelter

Fusako Sugawara



All Donors and Supporters (continued)

Mr. and Mrs. Michael Sullivan
 Summit House Restaurant
 Sup Dude, LLC
 Olga Suro
 Sushi Roku
 Sushi Studio Arts
 Mr. and Mrs. Thomas G. Suter
 Mr. and Mrs. Mark Sutter
 Mr. and Mrs. Kaoruhiko Suzuki
 Claudia Sysock
 Takeda
 Karen Tamis
 Janis M. Tanji and Victor Wong
 Tarzana Treatment Centers, Inc.
 Mr. and Mrs. Mario Tarzia
 Dr. and Mrs. Thomas E. Tate
 Chris Tawil
 Linda Tawil
 Mary Tawil
 Simon Tawil
 Mr. and Mrs. Thomas Techentin
 Andrew Teed
 Sherm and Marge Telleen
 Diana Thai
 Tanjareen Thomas
 Cheyenne Thompson
 Mr. and Mrs. Stephen M. Todd
 Tokio Marine America
 Tokio Marine Management, Inc.
 Tony Paredes - Rock Structures
 Mr. and Mrs. Gary C. Toops
 Maria Estela Torres and Angel Torres
 Mary Tracy
 Trina Turk
 Mr. and Mrs. David Trinin
 Trinity Presbyterian Church



Mr. and Mrs. Dhaval P. Trivedi
 Helen Tsuda
 Sherry Tunnell
 Suzanne Tutt
 Umpqua Bank
 Union Salon
 Rosemarie Unite
 United Way California Capital Region
 Heather Upton
 Virginia Upton
 USC University Relations
 USI Insurance Services, LLC
 Chelisa Vagim
 Georgia Vagim
 Mr. and Mrs. Alessandro Valentini
 Mr. and Mrs. Matt Van Buren
 Mr. and Mrs. James R. Van Gaasbeek
 Robin Vance
 Mr. and Mrs. John Vandavelde
 Maria Judith Vargas and Nora Benard
 Stephen J. Varner
 Mr. and Mrs. Richard Vasquez
 Venbrook Insurance
 Mr. and Mrs. Paul A. Vert
 Vida School
 Mr. and Mrs. Vince Villagaran
 Mr. and Mrs. Vincent Villagran
 Mr. and Mrs. Harish V. Vishria
 Samira Vishria
 Kathy Vislosky
 Teresa Vo
 Uyen-Uyen T. Vo
 Andrew Vollero
 Vroman's Bookstore
 Mr. and Mrs. Greg Wadeyla
 Mr. and Mrs. Victor Wagoner

Mr. and Mrs. Steve Walker
 Frank D. Waller
 Robert A. Waller Foundation
 The Walt Disney Company
 The Walt Disney Company Foundation
 Shawn Wang
 Amy Wanka
 Warner Bros.
 Warner Bros. Discovery
 Warner Bros. Entertainment, Inc.
 Colin Watanabe
 Dr. and Mrs. William Watkins
 David D. Watts
 Mary Weedman
 Mr. and Mrs. Bradford Weirick
 Marianne A. Weisel
 Mr. and Mrs. Aaron Weiss
 Kimberley Weleba
 West Coast Motorcycles, Inc. DBA
 Harley - Davidson of Glendale
 The Westin Bonaventure Hotel and Suites
 The Westin Rancho Mirage Golf
 Resort and Spa
 Gary Westphal
 Westridge School for Girls
 Kimberly White
 White Diamond Jewelers
 Karen Wicke
 Mr. and Mrs. John Wickersham
 Mr. and Mrs. Paul Wickersham
 Kelly Wilkins
 Beth Wilson
 Nancy Wilson and Geoff Bywater
 Wilson Sonsini Goodrich
 and Rosati Foundation
 The Winter Family

Mr. and Mrs. Richard Wohl
 Judy Wollman
 The Wong Family
 Mr. and Mrs. Kevin Wong
 Jennifer Wong Luc
 Mr. and Mrs. Mike Wong
 Janis M. Tanji Wong and Victor Wong
 Mr. and Mrs. David Worrell
 Kimberly Wu and Peter Joe
 Cathy Wullschleger
 Alyson Wycoff
 Thomas R. Yoder
 Yoga House
 The Henry A. and Cynthia G. Yost
 Family Foundation, Inc.
 Mr. and Mrs. Garret Zabel
 Jill Zaretsky
 Susan Zevnik
 Mr. and Mrs. Peter Ziegler
 Mr. and Mrs. Barry Ziehl
 The Donald Zonshine Family Foundation
 & The Galletly Family
 The Gwladys & John Zurlo
 Charitable Foundation



Looking Ahead: Growing What Matters Most

As Hillside looks toward the future, the work continues to grow in both reach and depth.

The needs of children, youth, and families are evolving, and Hillside remains committed to meeting those needs with care that is responsive, relationship-driven, and rooted in community. Across programs, the focus remains clear: expanding access to mental health support, supporting families from the moment they need care, and ensuring young people have the tools and stability to move forward with confidence.

Every step forward is made possible by the people who stand alongside Hillside.

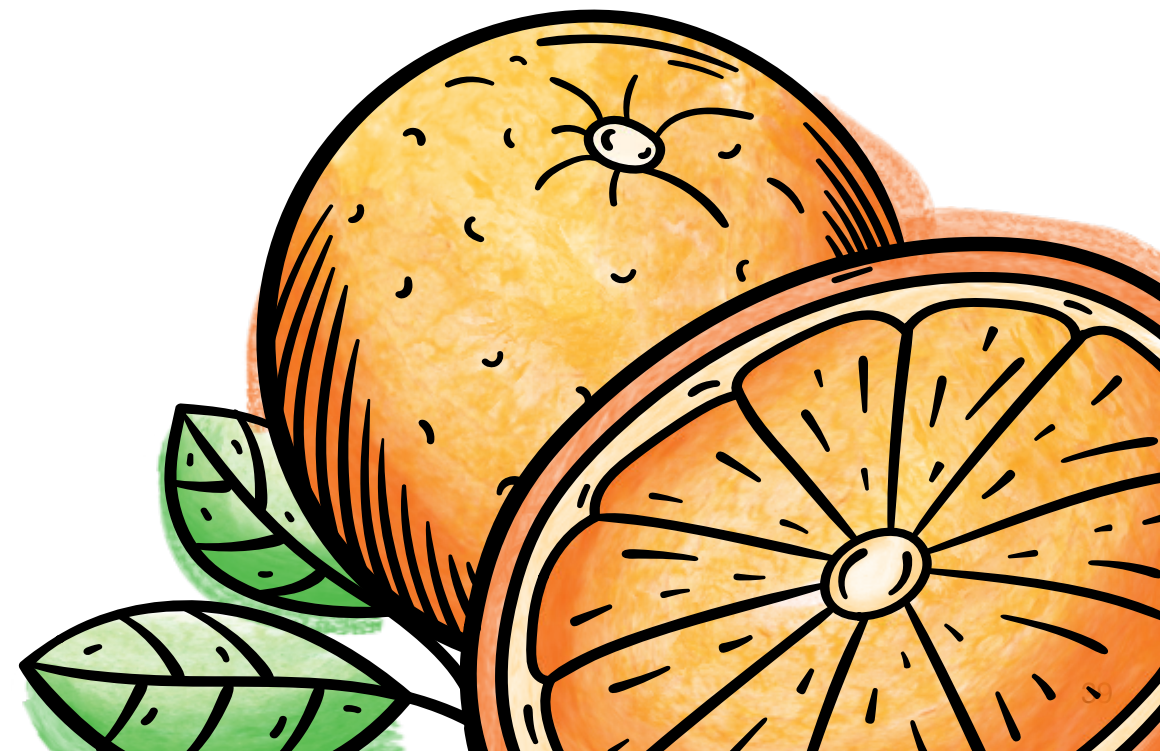
To our team members, who bring compassion and expertise to each moment of care.

To our volunteers, who create connection and joy in everyday experiences.

To our donors and partners, whose generosity allows this work to grow and reach those who need it most.

Because of you, the seeds planted more than a century ago continue to take root in new ways and new places.

And because of you, children, youth, and families are not only finding stability, but building futures grounded in hope, belonging, and possibility.





Hillsides

940 Avenue 64
Pasadena, CA 91105
323.254.2274
hillsides.org



Copywriting & editorial by Pink Parenthesis Marketing.
Design by RARELA Multimedia. Illustrations by Freepik.
Photography courtesy of Hillsides and Pexels.